



جَامِعَةُ نِزْوَى
University of Nizwa

College of Health Sciences
School of Nursing

NURSING STUDENT HANDBOOK

DECEMBER 2024

FOREWORD

Welcome to the School of Nursing!

As you embark on your journey toward becoming a competent and compassionate nurse, this Nursing Student Handbook will serve as an essential guide to help you navigate the policies, guidelines, and expectations set forth by our institution.

This handbook provides valuable information about the vision and mission of the School of Nursing, as well as details on our nursing programs, course descriptions, admission requirements, clinical guidelines, and grading system. It is designed to ensure that all nursing students have a clear understanding of academic and professional expectations, fostering a learning environment that upholds excellence, integrity, and ethical practice.

Nursing is a profession that demands both knowledge and dedication. By familiarizing yourself with the contents of this handbook, you will be better equipped to meet the challenges of your academic and clinical experiences. We encourage you to use this resource as a reference throughout your studies and to reach out to faculty and staff for guidance whenever needed.

We wish you success in your nursing education and look forward to witnessing your growth as future healthcare professionals.

TABLE OF CONTENTS

SECTION I

VISION, MISSION, OBJECTIVES AND SCHOOL STRUCTURE

1.1	Nursing Overview	6
1.2	Vision and Mission	6
1.3	Program Objectives and Program Outcomes	7
1.4	School Structure	8

SECTION II

PROGRAMME FRAMEWORK

2.1	General Requirements	9-15
2.2	Degree Description	16-17
2.3	Nursing Courses	18-57

SECTION III

POLICIES AND PROCEDURES

3.1	Selected University policies	58-60
3.2	School of Nursing Policies	61-69

SECTION IV

GRADING SYSTEM

4.1	Grading Method	70-72
4.2	Progression Standards	73-75

SECTION V

STUDENT RESOURCES AND SUPPORT SERVICES

5.1	Nursing Student Organization	76-77
5.2	Academic Support Services	77-80
5.3	Main Library	80
5.4	The Writing Center	81
5.5	Learning Enhancement	81-82
5.6	Other Student Support Services	83-84



University of Nizwa Vision, Mission and Graduate Attributes

Vision

The University of Nizwa aspires to be a beacon (minaret) of knowledge and enlightenment as a prominent higher education institution of excellence. It is to achieve a worldwide reputation for the quality of its programs and graduates and international distinction for innovation, progress and development.

Mission

The University of Nizwa is a non-profit academic institution, which is governed by its faculty. It shall promote positive thinking, preserve the nation's Islamic and cultural heritage and identity, faith in Allah and loyalty to the country and His Majesty. Its purpose is to broadly educate students and equip them with values, knowledge and life skills needed to enrich their lives and enable them to meaningfully contribute to the progress of society. To achieve its mission, the University shall develop dynamic integrative programs which provide high quality academic training, research and intellectual development.

Graduate Attributes

1. Possess solid knowledge in one's respective specialization.
2. Consider the impact of solutions for problems in the economy, society, culture, and the environment.
3. Provide creative, innovative and effective solutions to problems.
4. Acquire sufficient capabilities in the arts and sciences.
5. Demonstrate awareness of one's professional and ethical responsibilities.
6. Cultivate a value for lifelong learning, and the pursuit of continuing education.

SECTION I

VISION, MISSION AND OBJECTIVES OF THE SCHOOL OF NURSING

1.1 Nursing Overview

- Nursing is a professional practice discipline which offers a valuable service to the public by working with individuals, families, and communities, to develop and implement strategies, to meet health care needs.
- Nursing is guided by a multidisciplinary body of knowledge.
- Nursing operates holistically from a scientific base and utilizes the nursing process for integrating concepts and implementing therapeutic nursing intervention, taking into consideration the physical, psychological, social condition of the client.
- Nursing requires cultural sensitivity; and
- Nursing collaborates with clients, other health care providers, and the community.

1.2 Vision and Mission

VISION STATEMENT

The School of Nursing aspires to be a center of excellence in nursing education in the Sultanate of Oman that will produce graduates equipped with a spectrum of knowledge, skills and attitudes of professional nurses in clinical nursing practice, education, research, management, and leadership roles.

MISSION STATEMENT

The mission of the School of Nursing is to educate students through programs of international standards and equip them with values, knowledge and life skills required of professional nurses in clinical nursing practice, education, research, management, and leadership roles that will meet the unique health needs of people in the Sultanate of Oman and throughout the world.

1.3 Program Objectives and Program Outcomes

Program Objectives

1. The program aims to produce graduates who are:
2. Able to function within the social and cultural context of the Sultanate of Oman;
3. Able to function, both in the hospital settings and in the community;
4. Able to be active collaborators and participants in the health care team;
5. Able to meet the needs of an increasingly affluent and knowledgeable consumers;
6. Able to adapt to the profession's emerging roles;
7. Equipped with the skills for life-long learning; and
8. Equipped with the skills for scientific discovery and research.

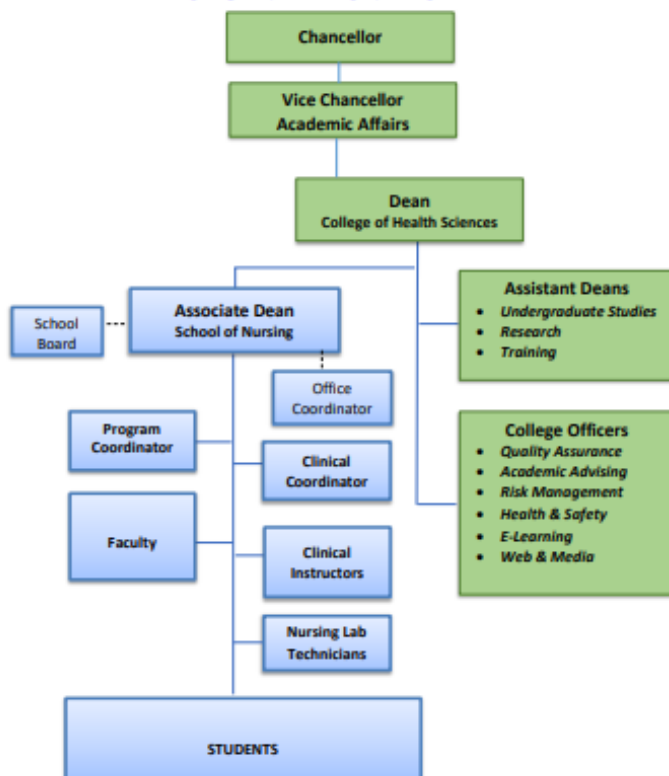
Program Outcomes

1. Possess knowledge of the natural, social, and behavioral sciences needed in the practice of nursing.
2. Demonstrate effective and appropriate communication skills in the care of clients, families and communities.
3. Deliver safe and holistic care to individuals, families and community using critical
4. thinking and the nursing process.
5. Practice nursing according to legal and ethical principles within the context of the
6. Sultanate of Oman.
7. Collaborate effectively for shared decision making with members of the health care team.
8. Engage in lifelong learning to keep up to date with new national and global developments in nursing and health.
9. Exhibit skills for scientific discovery, research, and evidence-based nursing practice.
10. Practice beginning leadership and management skills in various health care situations.

1.4 School Structure

The School of Nursing consists of the Associate Dean's office, lecturer's and Clinical Instructors' offices and the Nursing Skills Laboratories. The SON operates within the College of Health Sciences and is administered by the Associate Dean for Nursing. The Associate Dean is supported by one Assistant Dean (Instruction), four lecturers, 7 clinical instructors, two nursing skills laboratory technicians and one office administrator. More details about SON faculty and staff are listed below.

ORGANIZATIONAL CHART



SECTION II

PROGRAMME FRAMEWORK

Admission Requirements

The School of Nursing adheres to the university's established guidelines for admission, ensuring that all prospective students meet the necessary academic and personal qualifications. To be considered for admission, applicants are required to submit the following documents:

1. General Education Diploma/Secondary School Certificate: The original certificate along with two photocopies.
2. Good Conduct Certificate (Diploma): The original document and two copies.
3. Identification Documents: A copy of both the Identity Card and Passport.
4. Photographs: Five recent photographs with a white background.

In addition to providing these documents, candidates must successfully pass an admission interview and demonstrate they are physically fit for the nursing program.

For students transferring from other institutions, the following additional documents are required:

1. Original Academic Transcript: This must reflect the grades earned up to the last semester studied.
2. Grading Scale Documentation: An official explanation of the grading system used by the institution they are transferring from.
3. Course Descriptions: A detailed description of all courses previously completed.

A. General education courses required prior to beginning nursing-specific content/courses

Students are provided with a carefully designed curriculum that equips them with foundational knowledge and skills before they begin with the nursing-specific courses. The BSN program recognizes the importance of a well-rounded academic base, ensuring that students in the foundation program complete a series of essential courses that prepare them for the academic rigors of nursing school.

Foundation Program Courses

Students entering the foundation program are required to complete three key courses:

Digital Literacy: In this course, students develop the technological proficiency necessary for navigating today's digital landscape. From using basic computer applications to understanding digital communication tools, this course ensures that students are equipped to leverage technology effectively in both academic and clinical environments.

Basic Pure Mathematics: This course provides students with a strong mathematical foundation, essential for understanding more complex concepts in pharmacology, dosage calculations, and statistical analysis, all of which are crucial for evidence-based nursing practice.

Life and Study Skills: Recognizing that students need more than just academic knowledge to succeed, this course focuses on building essential life skills such as time management, effective communication, problem-solving, and critical thinking. Additionally, it helps students develop study techniques that will aid them throughout their academic journey.

After completing the foundation program, students' progress to their first year in the Bachelor of Science in Nursing (BSN) program. During this phase, they must complete a series of general education courses, which provide the knowledge base required for future nursing-specific education.

Arabic Language I and II and English Language I and II: These language courses emphasize the importance of bilingual proficiency, enabling students to communicate effectively in both local and global healthcare settings. Mastery of these languages is essential for patient interaction, documentation, and collaboration with healthcare professionals.

General Biology and Fundamentals of Chemistry: Both courses introduce the biological and chemical principles that underpin human anatomy and physiological processes. These subjects lay the groundwork for more specialized topics like microbiology and biochemistry.

Islamic Civilization: This course provides students with an understanding of the cultural and historical context in which they will be working. A solid grasp of Islamic civilization promotes culturally competent care, especially when serving Omani and other Muslim patients.

Anatomy and Physiology I and II: These courses are crucial for understanding the human body's structure and function, preparing students to assess and manage patient health in their future nursing careers.

Biochemistry: Biochemistry bridges the gap between basic sciences and clinical practice, enabling students to understand how molecular processes affect the functioning of the human body, which is critical for understanding diseases and treatments. Introduction to Oman

Introduction to Oman Health Care System: This course familiarizes students with the national healthcare system, policies, and regulations, providing a local context for their future practice. Understanding the Omani healthcare infrastructure prepares students to navigate the system effectively when they transition to clinical settings.

Computer Skills: Building on the digital literacy foundation, this course hones students' abilities in more advanced computing tasks, such as using health informatics systems, managing electronic health records, and conducting research online.

Microbiology and Immunology: This course provides essential knowledge about microorganisms, the immune system, and their roles in health and disease. Understanding the science behind infections, immunity, and vaccines is critical for future nursing practice, especially in infection control and prevention.

B. Length of time to complete the nursing program

The Bachelor of Science in Nursing (BSc. N) program is designed to prepare students for professional practice by combining theoretical knowledge with hands-on clinical and laboratory experiences. To successfully complete the BSc. N program, students are required to fulfill 152 credit hours.

These credit hours are distributed as follows:

- **University Requirements: 17**
- **University Electives: 03 College Requirements: 30**
- **College Electives: 04**
- **Major Requirements: 98**

The program structure aligns with the standards set by the Oman Qualification Framework (OQF), ensuring consistency and quality across the educational offerings. The academic calendar consists of three terms per year: Fall Semester, Spring Semester, and Summer Semester. To complete the BSN program, students are required to complete four full academic years and one additional Fall semester, providing them with the comprehensive education necessary for professional practice. The BSN program employs a clear credit-to-contact hour ratio for didactic, laboratory, and clinical/practicum learning experiences. This approach ensures that students receive the appropriate balance of theoretical and practical education to meet the program's objectives.

The credit-to-contact hour ratios are as follows:

Theory (Didactic): 1 credit hour equals 1 contact hour per week for 15 weeks. **Laboratory:** 1 credit hour equals 2 contact hours per week for 15 weeks. **Clinical/Practicum:** 1 credit hour equals 4 contact hours per week for 15 weeks. This structure enables students to develop the knowledge, skills, and competencies necessary to excel in the nursing profession, ensuring a balanced approach to both theoretical and practical learning. The combination of credit hours and contact hours ensures that students receive sufficient exposure to academic concepts while gaining hands-on experience in clinical settings.

Practice laboratory environments available to students for learning nursing skills.

The School of Nursing has 4 designated skills laboratories. In line with the learning outcomes of Foundation of Nursing I and II, the Foundation of Nursing Skills Laboratory introduces the fundamentals of nursing practice to the students. Procedures basic to the discipline and practice of nursing are taught in a continuum from lower to higher level fundamental skills such as hygiene care, taking vital signs, lifting, positioning, intake and output monitoring, asepsis, wound dressing, suture removal, drug administration, administration of IV fluids, and many others. Also, the Foundation of Nursing Skills Laboratory is utilized for the laboratory component of Health Assessment. The nursing care process is introduced to the students. During their laboratory sessions, the students are trained to take health history and conduct physical assessment and practice their skills in organizing and presenting health data as basis for formulating nursing diagnoses/nursing problems, planning, implementing, and evaluating nursing care. The Adult Nursing Laboratory is integral in meeting the learning outcomes of Adult Nursing

I and II. The laboratory showcases the introduction and enhancement of nursing procedures deemed necessary to care for adult clients with alterations in health status particularly those with medical and/or surgical problems. Various nursing procedures are taught and mastered by the students such as taking and analyzing electrocardiography (ECG) results, suctioning, nasogastric tube insertion and feeding, stoma care, urinary catheter insertions, Glasgow coma scale assessment, instillation of eye, ear and nose drops, application of skin and skeletal tractions, care of clients with external fixators, safe use of assistive devices, blood transfusion, calculation of burns injury, dressing burns injury, reverse barrier nursing, and safe administration of neoplastic therapies. Moreover, the Adult Nursing Laboratory hones the students' abilities in giving effective health education to their clients and their families for the promotion, maintenance and restoration of their health status. The Maternal, Child and Community Health Nursing caters to students who are taking up Maternal and Women's Health Nursing, Child Health Nursing and Community Health Nursing. Maternal and Women's Health Nursing focuses on the study of women during different cycles of their lives including childbearing, child rearing and menopausal periods.

The laboratory is especially designed to aid the students' appreciation of the course. Low to medium fidelity manikins that simulate the stages of delivery and newborn care are available. Fundamental skills in the care of the pregnant mother are introduced and enhanced in the laboratory such as Leopold's maneuver, calculation of age of gestation and expected date of delivery, fetal heart rate measurement, and fundic height measurement. Care of the newly delivered mother such as perineal care, breastfeeding, monitoring of uterine involution, lochia, and any untoward complications are learned by the students. Anthropometric measurements and physical assessment, bathing and Vitamin K administration of the newborn are also taught as core skills in the care of the newborn. Moreover, the Laboratory exposes the students to learn the basic skills in the care of sick children. Essential nursing skills such as expanded program of immunization (EPI), developmental assessment, height and weight measurement, physical assessment and safe administration of drugs to children are being taught in the nursing laboratory. Lastly, Community Health Nursing Laboratory is utilized to develop the skills of the students for the assessment, planning, implementation, and evaluation of individuals, families, groups and community at different stages of their lives. The laboratory is utilized in reviewing integral skills in the promotion of community health such as EPI, breastfeeding, antenatal/ postnatal assessment and growth monitoring. The Critical Nursing Laboratory accommodates students taking Critical Care Nursing. The laboratory's physical set-up is

uniquely designed to hone the beginning skills of the nursing students in handling clients requiring critical care. Equipment for endotracheal insertion, resuscitative devices and emergency medications are available in the laboratory and are taught to the students. Low to medium fidelity manikins that simulate clinical scenarios of clients with critical illness are showcased to enhance the students' abilities in the provision of emergency and life-saving interventions. Manikins and set-up for basic life support are also available.

C. Practice learning environments available to students for clinical experiences in which care is provided to patients.

The nursing education program at the University of Nizwa is affiliated with various hospitals and health centers across Oman. These healthcare institutions serve as crucial practice learning environments, providing students with invaluable clinical experience while offering care to patients. The partnership with these healthcare facilities ensures that nursing students can apply theoretical knowledge in real-world settings, preparing them for their professional careers. Nizwa Hospital is one of the key hospitals in this network. It serves as a reference hospital, providing secondary healthcare to residents of Al Dakhiliyah Governorate and its neighboring areas. The hospital has grown significantly, with a recent expansion project increasing its bed capacity to over 555, including specialized units such as cardiac care, neonatal intensive care, and advanced diagnostic services like MRI and CT scans. The hospital offers a wide range of services, from emergency care to highly specialized treatments, and includes a new integrated research and training center. This variety of services allows nursing students to gain experience in a multitude of medical disciplines, from maternity care to critical cardiac interventions.

Sumail Polyclinic and Izki Polyclinic are primary healthcare facilities located in Al Dakhiliyah, offering basic health services such as laboratory screenings, diagnostic tests, and specialized clinics for diabetes, dermatology, ENT, ophthalmology, and asthma. These clinics emphasize community health education and preventive care, making them ideal settings for students to engage in primary healthcare and patient education, particularly in chronic disease management and maternal health.

Ibri Hospital, a regional and reference hospital in the Dhahirah Governorate, is another important clinical site for nursing students. With 240 beds and a range of secondary healthcare services, it provides emergency and inpatient care around the clock. Students here gain experience in managing both routine and emergency cases, honing their skills in patient care under the supervision of experienced healthcare professionals.

Khoula Hospital, established in 1974, is renowned for its specialized surgical services, including neurosurgery, orthopedic surgery, and spinal surgery. As the first surgical hospital in Oman, it is recognized by the British Royal Society of Orthopedics. Nursing students assigned to Khoula Hospital are exposed to high-level surgical care, complex emergency treatments, and specialized services in areas such as intensive care and neurology. This makes Khoula Hospital a premier institution for clinical learning, particularly in surgical nursing and trauma care.

Al Massarah Hospital, Oman's only psychiatric hospital, provides specialized services in mental health care, including adult, geriatric, and adolescent psychiatry, as well as forensic psychiatry. The hospital offers comprehensive mental health services, from substance misuse treatment to social work, speech therapy, and occupational therapy. Nursing students here are trained in the complexities of psychiatric nursing, gaining valuable insights into mental health care and rehabilitation.

Additionally, various health centers, such as **Birkat Almouz Health Center**, **Firq Health Center**, **Nizwa Polyclinic**, and others, play a critical role in offering primary care. These centers provide students with experience in community healthcare settings, where they encounter a range of patient needs, from routine check-ups to managing chronic diseases. These diverse clinical learning environments allow University of Nizwa nursing students to develop a well-rounded skill set, preparing them to meet the challenges of the healthcare profession in Oman and beyond.

2.2 Degree Description

The School of Nursing offers two programs. The one baccalaureate degree program and the diploma program.

Bachelor of Science Nursing Program

The Bachelor of Science degree in nursing is the critical first step for a career in professional nursing. THE AMERICAN ASSOCIATION OF COLLEGE OF NURSING (AACN) and other leading nursing organization recognize the BSN degree as the minimum educational requirement for professional nursing practice. To be a holder of a Bachelor degree in nursing science, students must successfully complete the minimum of 152 credits. The components are as follows:

UNIVERSITY REQUIREMENTS (UR)	27 credits
COLLEGE REQUIREMENTS (CR)	56 credits
SCHOOL REQUIREMENTS (SR)	69 credits

	152 credits

The course structure is detailed on pages (11-18)

Diploma in Nursing Program

To be a holder of a Diploma Degree in Nursing Science, students must successfully complete the minimum of 96 credit hours which are distributed as follows:

UNIVERSITY REQUIREMENTS (UR)	21 credits
COLLEGE REQUIREMENTS (CR)	26 credits
SCHOOL REQUIREMENTS (SR)	49 credits

	96 credits

The course structure is detailed on pages (19-24)

Bachelor of Science Nursing Bridging Program

The School of Nursing Bachelor of Science Nursing Bridging Program enables the nurse with leadership skill, clinical competency, and strong bachelor's degree in nursing on a full-time or part-time basis. The minimum requirement for completion of the BSN bridging is 88 credits. The components are as follows:

UNIVERSITY REQUIREMENTS (UR)	27 credits
COLLEGE REQUIREMENTS (CR)	38 credits
SCHOOL REQUIREMENTS (SR)	18 credits

88 credits

Bachelor of Science in Nursing Bridging Program for Diploma in Nursing Graduates of the University of Nizwa, The following are the components:

UNIVERSITY REQUIREMENTS (UR)	6 credits
COLLEGE REQUIREMENTS (CR)	28 credits
SCHOOL REQUIREMENTS (SR)	13 credits
SCHOOL ELECTIVES	6 credits

88 credits



Study Plan
Bachelor of Science in Nursing (BSN) Program
Effective AY 2024-2025

YEAR ONE									
SEMESTER ONE				SEMESTER TWO				SUMMER SEMESTER	
COURSE CODE	COURSE TITLE	PRE /CO-REQUISITE	CREDIT HOURS	COURSE CODE	COURSE TITLE	PRE /CO-REQUISITE	CREDIT HOURS	COURSE CODE	COURSE TITLE
ARAB100	Arabic Language I		2	ARAB101	Arabic Language II	ARAB100	2	PATH200	Pathophysiology
ENGL150	English Language I		2	ENGL152	English Language II	ENGL150	2	BIOL343	Microbiology and Immunology
BIOL101	General Biology	Co: BIOL101L	4	CHEM334	Biochemistry	Pre: BIOL101/ CHEM107	3		
CHEM107	Fundamentals of Chemistry	Co: CHEM107L	4	ANAT101	Anatomy and Physiology II	Pre: BIOL101 ANAT100 Co: ANAT101L	3		
ANAT100	Anatomy and Physiology I	Co: BIOL101 ANAT100L	3	ANAT101L	Anatomy and Physiology II Lab	Co: ANAT101	1		
ANAT100L	Anatomy and Physiology I Lab	Co: ANAT100	1	OHCS105	Introduction to the Oman Health Care System		1		
				COMP101	Computer Skills	Pre: DL - Digital Literacy, MATH-BP - Basic Pure Mathematic	2		
TOTAL			16	TOTAL			14	TOTAL	
									6

YEAR TWO										
SEMESTER THREE				SEMESTER FOUR				SUMMER SEMESTER		
COURSE CODE	COURSE TITLE	PRE /CO-REQUISITE	CREDIT HOURS	COURSE CODE	COURSE TITLE	PRE /CO-REQUISITE	CREDIT HOURS	COURSE CODE	COURSE TITLE	PRE/CO-REQUISITE
NRSRG101	Fundamentals of Nursing	Pre: ANAT100/1 Co: NRSRG110L NRSRG105 NRSRG100 NRSRG101	3	NRSRG220	Adult Health Nursing I	Pre: NRSRG101/1 OS MSCC200 Co: NRSRG225 PHRM200 PHRM207L	3	NRSRG203	Therapeutic Nutrition	Pre: NRSRG101/1 OS
NRSRG101L	Fundamentals of Nursing Lab	Co: NRSRG101	2	NRSRG220 L	Adult Health Nursing I Lab	Co: NRSRG220/220L	1	HIST150	Islamic Civilization	
NRSRG105	Fundamentals of Nursing Clinical	Co: NRSRG101 NRSRG101L NRSRG110L	2	NRSRG225	Adult Health Nursing I - Clinical	Co: NRSRG220 NRSRG220L PHRM200 PHRM207L	3	HINF210L	Health Informatics Laboratory	Pre: COMP101
NRSRG110L	Health Assessment Laboratory	Pre: ANAT100/1 Co: NRSRG101 NRSRG105	2	PHRM200	Pharmacology for Nurses	Pre: NRSRG101/1 OS NRSRG110L Co: NRSRG220/225	3			
NRSRG100	Introduction to Nursing Profession	Co: NRSRG101	2							
NRSRG104L	First Aid and Basic Life Support Laboratory		1	PHRM207 L	Drug Dosage and Calculations Laboratory	Pre: NRSRG101/1 OS NRSRG220/225 PHRM200	1			
NRSRG103	Therapeutic Communication	Co: NRSRG101	2	PSCH150	Psychology		3			
TOTAL			14	TOTAL			14	TOTAL		6

YEAR THREE										
SEMESTER FIVE				SEMESTER SIX				SUMMER SEMESTER		
COURSE CODE	COURSE TITLE	PRE /CO-REQUISITE	CREDIT HOURS	COURSE CODE	COURSE TITLE	PRE /CO-REQUISITE	CREDIT HOURS	COURSE CODE	COURSE TITLE	PRE /CO-REQUISITE
NRSG230	Adult Health Nursing II	Pre: NRSG220/225 Co: NRSG230L NRSG235	3	NRSG340	Maternal & Women's Health Nursing	Pre: NRSG220/225 Co: NRSG345 NRSG350/355	3	BSTA300	Biostatistics	Pre/Co: NRSG301
NRSG230L	Adult Health Nursing II Lab	Co-requisite: NRSG230	1	NRSG340L	Maternal & Women's Health Nursing Lab	Co: NRSG340	1	MNGT100	Entrepreneurship Creativity and Innovation	Must have completed 45 credit hours
NRSG235	Adult Health Nursing II - Clinical	Pre: NRSG220/225 Co: NRSG230 NRSG230L	3	NRSG345	Maternal & Women's Health Nursing Clinical	Pre: NRSG220/225 Co: NRSG340 NRSG350 NRSG355	2			
NRSG380	Health Education and Promotion		2	NRSG350	Child Health Nursing	Pre: NRSG220/225 Co: NRSG340/345 NRSG355	3			
NRSG301	Research, Epidemiology and Evidence Based Practice	Must have completed 60 credit hours	3	NRSG350L NRSG355	Child Health Nursing - Clinical	Co: NRSG350 Co: NRSG340/345 NRSG350 NRSG350L	1 2			
NRSG250	Psychosocial Aspects of Care		2	CARC300	Career Counseling	Must have completed 60 credit hours	1			
TOTAL			14	TOTAL			13	TOTAL		5

YEAR FOUR										
SEMESTER SEVEN				SEMESTER EIGHT				Summer Semester		
COURSE CODE	COURSE TITLE	PRE / CO-REQUISITE	CREDIT HOURS	COURSE CODE	COURSE TITLE	PRE / CO-REQUISITE	CREDIT HOURS	COURSE CODE	COURSE TITLE	PRE / CO-REQUISITE
NRSG370	Gerontological Nursing	Pre: NRSG230/235 NRSG340 NRSG350	3	NRSG410	Community Health Nursing	Pre: NRSG340 NRSG350 Co: NRSG415 NRSG450	3	TBD	University Elective	
NRSG400	Mental Health Nursing	Pre: NRSG230/235 NRSG340 NRSG350 Co: NRSG405	3	NRSG415	Community Health Nursing – Practicum	Pre: NRSG345 NRSG355 NRSG405 Co: NRSG410 NRSG450/455	2	TBD	College Elective 1	2
NRSG405	Mental Health Nursing – Clinical	Pre: NRSG230/235 NRSG340 NRSG350 Co: NRSG400	2	NRSG450	Critical Care Nursing	Pre: NRSG220/235 NRSG340/350 Co: NRSG410/415 NRSG455	2	TBD	College Elective 2	2
NRSG425	Global Health		2	NRSG450	Critical Care Nursing Lab	Co: NRSG450	1			
NRSG444	Graduation Project	Pre: NRSG300 NRSG301	6	NRSG455	Critical Care Nursing Clinical	Pre: NRSG225/235 NRSG345/355 Co: NRSG450	1			
				NRSG320	Professional Issues and Ethics		2			
				NRSG420	Research and Management in		2			

[illegible]

YEAR FIVE											
SEMESTER NINE				SEMESTER TEN				SUMMER SEMESTER			
COURSE CODE	COURSE TITLE	PRE /CO-REQUISITE	CREDIT HOURS	COURSE CODE	COURSE TITLE	PRE /CO-REQUISITE	CREDIT HOURS	COURSE CODE	COURSE TITLE	PRE /CO-REQUISITE	CREDIT HOURS
NPEX002	Nursing Professional Examination	Must have completed 139 credit hours	1								
NRS6499	INTERNSHIP	Must have passed the NPEX002	12								
TOTAL			13	TOTAL				TOTAL			

SUMMARY OF CREDITS

REQUIREMENTS		CREDIT HOURS
UNIVERSITY REQUIREMENTS		
UNIVERSITY ELECTIVESS		17
COLLEGE REQUIREMENTS		30
COLLEGE ELECTIVES		04
MAJOR REQUIREMENTS		98
TOTAL		152



Study Plan

7

YEAR TWO				SUMMER SEMESTER			
FALL SEMESTER		SPRING SEMESTER		SUMMER SEMESTER			
COURSE CODE	COURSE TITLE	PRE /CO-REQUISITE	CREDIT HOURS	COURSE CODE	COURSE TITLE	CREDIT HOURS	
NRSGL01	Fundamentals of Nursing	Prerequisite: HSCRL01 Co-requisites: NRSGL105 NRSGL110L	3	NRSGL220	Adult Health Nursing I	3	NRSGL220
NRSGL01	Fundamentals of Nursing	Prerequisite: HSCRL01 Co-requisites: NRSGL105 NRSGL110L	3	NRSGL220	Adult Health Nursing I	3	NRSGL220
NRSGL05	Fundamentals of Nursing Clinical	Prerequisite: HSCRL01 Co-requisites: NRSGL105 NRSGL110L	2	NRSGL220	Adult Health Nursing I	3	NRSGL220
NRSGL10	Health Assessment Laboratory	Prerequisite: HSCRL01 Co-requisites: NRSGL105 NRSGL110L	2	NRSGL220	Adult Health Nursing I	3	NRSGL220
NRSGL10	Health Assessment Laboratory	Prerequisite: HSCRL01 Co-requisites: NRSGL105 NRSGL110L	2	NRSGL220	Adult Health Nursing I	3	NRSGL220
NRSGL10	Introduction to Nursing Profession	Prerequisite: HSCRL01 Co-requisites: NRSGL105 NRSGL110L	2	NRSGL220	Adult Health Nursing I	3	NRSGL220
NRSGL10	First Aid and Basic Life Support Laboratory	Prerequisite: HSCRL01 Co-requisites: NRSGL105 NRSGL110L	1	NRSGL220	Adult Health Nursing I	3	NRSGL220
NRSGL10	Drug Dosage and Calculation Laboratory	Prerequisite: HSCRL01 Co-requisites: NRSGL105 NRSGL110L	1	NRSGL220	Adult Health Nursing I	3	NRSGL220
TOTAL			13	TOTAL		15	TOTAL

[illegible]

25

YEAR FOUR							
FALL SEMESTER				SPRING SEMESTER			
COURSE CODE	COURSE TITLE	PREF / CO-REQUISITE	CREDIT HOURS	COURSE CODE	COURSE TITLE	PREF / CO-REQUISITE	CREDIT HOURS
NRSRG370	Gerontological Nursing	Pre-requisites: NRSRG230 NRSRG340, 350	3	NRSRG375 L	Advance Clinical Nursing Laboratory	Pre-requisite: NRSRG370	2
						University Elective	3
NRSRG410	Community Health Nursing	Pre-requisites: NRSRG340 NRSRG350 Co-Requisites:	3	NRSRG400	Mental Health Nursing	Pre-requisites: NRSRG230 Co-Requisites:	3
						School Elective 2	2

NRSG415	Community Health Nursing- Practicum	NRSG415	2	NRSG405	Mental Health Nursing – Clinical	Pre-requisite: NRSG235 Co-requisite: NRSG400	2	School Elective 3	2
HSCR400	Graduation Research Project	HSCR300	6	NRSG320	Professional Issues and Ethics		2		
	School Elective 1	HSCR301	2	NRSG420	Leadership and Management in Health Care		3		
TOTAL			16	TOTAL			12	TOTAL	7

YEAR FIVE – FALL SEMESTER			
NPEX002	Nursing Professional Experience		0
HSCR490	INTERNSHIP (16 WEEKS)		8
TOTAL			8

SUMMARY OF CREDITS

REQUIREMENTS	CREDIT HOURS
UNIVERSITY REQUIREMENTS	27
Mandatory Requirements .A	24
Electives .B	03
COLLEGE REQUIREMENTS	47
SCHOOL REQUIREMENTS	78
Mandatory Requirements .A	72
Electives .B	06
TOTAL	152



YEAR TWO											
FALL SEMESTER				SPRING SEMESTER				SUMMER SEMESTER			
COURSE CODE	COURSE TITLE	PRE /CO- REQUISITE	CREDIT HOURS	COURSE CODE	COURSE TITLE	PRE /CO- REQUISITE	CREDIT HOURS	COURSE CODE	COURSE TITLE	PRE /CO- REQUISITE	CREDIT HOURS
NRSG101	Fundamentals of Nursing	Prerequisite: HSC101 Co-requisites: NRSG105 NRSG110L	3	NRSG220	Adult Health Nursing I	Pre-requisites: NRSG101/105 NRSG110L Co-requisites: NRSG225 PHRM200	3	NRSG230	Adult Health Nursing II	Pre-requisite: NRSG220/23 Co-requisites: NRSG235	3
NRSG101	Fundamentals of Nursing Lab		2	NRSG220L	Adult Health Nursing I Lab		1	NRSG230L	Adult Health Nursing II Lab		1

NRS105	Fundamentals of Nursing Clinical	2	NRS225	Adult Health Nursing I - Clinical	Co-requisites: NRS220, 220L	3	NRS235	Adult Health Nursing II - Clinical	Co-requisites: NRS230, 230L	3
NRS110	Health Assessment Laboratory	2	PHRM200	Pharmacology for Nurses	Pre-requisites: NRS101/105	3				
NRS100	Introduction to Nursing Profession	2			Co-requisites: NRS110L, NRS110L, NRS100L					
HSCR104	First Aid and Basic Life Support Laboratory	1	HSCR210L	Health Informatics Laboratory	Co-requisites: NRS220/22	1				
PHRM100L	Drug Dosage and Calculation Laboratory	1			Co-requisites: NRS220/22					
TOTAL		13	TOTAL			11	TOTAL			7

YEAR THREE													
FALL SEMESTER				SPRING SEMESTER				SUMMER SEMESTER					
COURSE CODE	COURSE TITLE	PRE /CO-REQUISITE	CREDIT HOURS	COURSE CODE	COURSE TITLE	PRE /CO-REQUISITE	CREDIT HOURS	COURSE CODE	COURSE TITLE	PRE /CO-REQUISITE	CREDIT HOURS		
NRSG340	Maternal & Women's Health Nursing	Pre-requisites: NRSG230/235 Co-requisites: NRSG340/340L	3	NRSG410	Community Health Nursing	Pre-requisites: NRSG340 Co-requisites: NRSG400	3						
NRSG340L	Maternal & Women's Health Nursing Lab		1										
NRSG345	Maternal & Women's Health Nursing - Clinical	Co-requisites: NRSG340, 340L	2	NRSG415	Community Health Nursing – Practicum	Co-requisites: NRSG410, 410L	2						
NRSG350	Child Health Nursing	Pre-requisites: NRSG230/235	3	NRSG400	Mental Health Nursing	Pre-requisite: NRSG405	3						

YEAR FOUR – FALL SEMESTER		
NPEX002	Nursing Professional Examination	0
HSCR-490	INTERNSHIP (16 WEEKS)	5
TOTAL		5

**College of Health Sciences
School of Nursing
Study Plan
Revised/Enriched Bachelor
Effective AY 2020-2021**

YEAR ONE							
FALL SEMESTER				SPRING SEMESTER			
COURSE CODE	COURSE TITLE	PRE /CO-REQUISITE	CREDIT HOURS	COURSE CODE	COURSE TITLE	PRE /CO-REQUISITE	CREDIT HOURS
ENGL155	Communication Skills		3	PSCH150	Psychology		3
CHEM334	Biochemistry		3	HSCR100/O	Anatomy and Physiology I		3
BIOL200	Microbiology and Immunology		3	HSCR100/L	Anatomy and Physiology I-Laboratory		1
NRSG250	Psychosocial Aspects of Care		2	PHRM200	Pharmacology for Nurses		3
HSCR301	Research, Epidemiology and Evidence Based Practice		3	HSCR200	Pathophysiology		3
	School Elective 1		2	NRSG203	Therapeutic Nutrition		2
TOTAL			16	HSCR105	Introduction to Oman Health Care System		1
				TOTAL			16

YEAR TWO									
FALL SEMESTER					SPRING SEMESTER				
COURSE CODE	COURSE TITLE	PRE /CO-REQUISITE	CREDIT HOURS	COURSE CODE	COURSE TITLE	PRE /CO-REQUISITE	CREDIT HOURS	COURSE CODE	COURSE TITLE
NRSG380	Health Education and Promotion		2	NRSG103	Therapeutic Communication		2		School Elective 2
NRSG110L	Health Assessment Laboratory		2	NRSG320	Professional Issues and Ethics		2		School Elective 3
NRSG370	Gerontological Nursing		3	NRSG375L	Advance Clinical Nursing Laboratory	Pre-requisite: NRSG370	2	HSCR210L	Health Informatics Laboratory

HSCR400	Graduation Research Project	HSCR300 HSCR301	6	NRS375	Advance Clinical Nursing Practicum	6			
NRS3420	Leadership and Management in Health Care		3	MNGT100	Entrepreneurship: Innovation and Creativity	3			
HSCR104L	First Aid and Basic Life Support Laboratory		1		University Elective	3			
TOTAL			17	TOTAL		18	TOTAL		5

SUMMARY OF CREDITS

REQUIREMENTS	CREDIT HOURS
UNIVERSITY REQUIREMENTS	09
Mandatory Requirements .C	06
Electives .D	03
COLLEGE REQUIREMENTS	31
SCHOOL REQUIREMENTS	38
Mandatory Requirements .C	32
Electives .D	06
TOTAL	78



College of Health Sciences
School of Nursing
Study Plan
Bachelor of Science in Nursing (BSN) Program
Effective AY 2024-2025

YEAR ONE											
SEMESTER ONE				SEMESTER TWO				SUMMER SEMESTER			
COURSE CODE	COURSE TITLE	PRE /CO-REQUISITE	CREDIT HOURS	COURSE CODE	COURSE TITLE	PRE /CO-REQUISITE	CREDIT HOURS	COURSE CODE	COURSE TITLE	PRE /CO-REQUISITE	CREDIT HOURS
ARAB100	Arabic Language I		2	ARAB101	Arabic Language II	ARAB100	2	PATH200	Pathophysiology	Pre: ANAT100 ANAT101	3
ENGL150	English Language I		2	ENGL152	English Language II	ENGL150	2	BIOL343	Microbiology and Immunology	Pre: BIOL101	3
BIOL101	General Biology	Co: BIOL101L	4	CHEM334	Biochemistry	Pre: BIOL101/ CHEM107	3				
CHEM107	Fundamentals of Chemistry	Co: CHEM107L	4	ANAT101	Anatomy and Physiology II	Pre: BIOL101 ANAT100 Co: ANAT101L	3				
ANAT100	Anatomy and Physiology I	Co: BIOL101 ANAT100L	3	ANAT101L	Anatomy and Physiology II Lab	Co: ANAT101	1				
ANAT100L	Anatomy and Physiology I Lab	Co: ANAT100	1	OHCS105	Introduction to the Oman Health Care System		1				
				COMP101	Computer Skills	Pre: DI - Digital Literacy, MATH-BP - Basic Pure Mathematics	2				
TOTAL			16	TOTAL			14	TOTAL			6

YEAR TWO									
SEMESTER THREE				SEMESTER FOUR				SUMMER SEMESTER	
COURSE CODE	COURSE TITLE	PRE /CO-REQUISITE	CREDIT HOURS	COURSE CODE	COURSE TITLE	PRE /CO-REQUISITE	CREDIT HOURS	COURSE CODE	COURSE TITLE
NRSG101	Fundamentals of Nursing	Pre: ANAT100/101 Co: NRSG110L, NRSG105, NRSG100, NRSG101	3	NRSG220	Adult Health Nursing I	Pre: NRSG101/105 Co: NRSG110L, MSCC200, NRSG225, PHRM200, PHRM207L	3	NRSG203	Therapeutic Nutrition
NRSG101L	Fundamentals of Nursing Lab	Co: NRSG101	2	NRSG220L	Adult Health Nursing I Lab	Co: NRSG220/220L	1	HIST150	Islamic Civilization
NRSG105	Fundamentals of Nursing Clinical	Co: NRSG101, NRSG101L, NRSG110L	2	NRSG225	Adult Health Nursing I - Clinical	Co: NRSG220, NRSG220L, PHRM200, PHRM207L	3	HINF210L	Health Informatics Laboratory
NRSG110L	Health Assessment Laboratory	Pre: ANAT100/101 Co: NRSG101, NRSG105	2	PHRM200	Pharmacology for Nurses	Pre: NRSG101/105 Co: NRSG110L, NRSG220/225	3		
NRSG100	Introduction to Nursing Profession	Co: NRSG101	2						
NRSG104L	First Aid and Basic Life Support Laboratory	Co: NRSG101	1	PHRM207L	Drug Dosage and Calculations Laboratory	Pre: NRSG101/105 Co: NRSG220/225, PHRM200	1		
NRSG103	Therapeutic Communication	Co: NRSG101	2	PSCH150	Psychology		3		
TOTAL			14	TOTAL			14	TOTAL	
									6

YEAR THREE										
SEMESTER FIVE				SEMESTER SIX				SUMMER SEMESTER		
COURSE CODE	COURSE TITLE	PRE / CO-REQUISITE	CREDIT HOURS	COURSE CODE	COURSE TITLE	PRE / CO-REQUISITE	CREDIT HOURS	COURSE CODE	COURSE TITLE	PRE / CO-REQUISITE
NRSG230	Adult Health Nursing II	Pre: NRSG220/225 Co: NRSG230L NRSG235	3	NRSG340	Maternal & Women's Health Nursing	Pre: NRSG230/235 Co: NRSG345 NRSG350/355	3	BSTA300	Biostatistics	Pre/Co: NRSG301
NRSG230L	Adult Health Nursing II Lab	Co-requisite: NRSG230	1	NRSG340L	Maternal & Women's Health Nursing Lab	Co: NRSG340	1	MNGT100	Entrepreneurship Creativity and Innovation	Must have completed 45 credit hours
NRSG235	Adult Health Nursing II - Clinical	Pre: NRSG220/230 Co: NRSG230L NRSG230L	3	NRSG345	Maternal & Women's Health Nursing Clinical	Pre: NRSG230/235 Co: NRSG340 NRSG350 NRSG355	2			
NRSG380	Health Education and Promotion		2	NRSG350	Child Health Nursing	Pre: NRSG230/235 Co: NRSG340/345 NRSG355	3			
NRSG301	Research, Epidemiology and Evidence Based Practice	Must have completed 60 credit hours	3	NRSG350L	Child Health Nursing Lab	Co: NRSG350 Co: NRSG340/345	1			
NRSG250	Psychosocial Aspects of Care		2	CARC300	Career Counseling	NRSG350L Must have completed 60 credit hours	1			
TOTAL			14	TOTAL			13	TOTAL		5

YEAR FOUR									
SEMESTER SEVEN				SEMESTER EIGHT				Summer Semester	
COURSE CODE	COURSE TITLE	PRE / CO-REQUISITE	CREDIT HOURS	COURSE CODE	COURSE TITLE	PRE / CO-REQUISITE	CREDIT HOURS	COURSE CODE	COURSE TITLE
NRSG370	Gerontological Nursing	Pre: NRSG230/2 35 NRSG340 NRSG350	3	NRSG410	Community Health Nursing	Pre: NRSG340 NRSG350 NRSG400 Co: NRSG415 NRSG450	3	TBD	University Elective
NRSG400	Mental Health Nursing	Pre: NRSG230/2 35 NRSG340 NRSG350 Co: NRSG405	3	NRSG415	Community Health Nursing – Practicum	Pre: NRSG345 NRSG355 NRSG405 Co: NRSG410 NRSG450/4	2	TBD	College Elective 1
NRSG405	Mental Health Nursing – Clinical	Pre: NRSG230/2 35 NRSG340 NRSG350 Co: NRSG400	2	NRSG450	Critical Care Nursing	Pre: NRSG220/2 30 NRSG340/3 50 Co: NRSG410/4 15 NRSG455	2	TBD	College Elective 2
NRSG425	Global Health		2	NRSG450	Critical Care Nursing Lab	Co: NRSG450	1		
NRSG444	Graduation Project	Pre: BSTA300 NRSG301	6	NRSG455	Critical Care Nursing Clinical	Pre: NRSG225/2 35 NRSG345/3 55 Co: NRSG450	1		
				NRSG320	Professional Issues and Ethics		2		
				NRSG420	Leadership and Management in Health Care		2		

YEAR FIVE											
SEMESTER NINE				SEMESTER TEN				SUMMER SEMESTER			
COURSE CODE	COURSE TITLE	PRE / CO-REQUISITE	CREDIT HOURS	COURSE CODE	COURSE TITLE	PRE / CO-REQUISITE	CREDIT HOURS	COURSE CODE	COURSE TITLE	PRE / CO-REQUISITE	CREDIT HOURS
TOTAL			16	TOTAL			1	TOTAL			7
NRSX002	Nursing Professional Examination	Must have completed 139 credit hours	1								
NRSG499	INTERNSHIP	Must have passed the NPEx002	12								
TOTAL			13	TOTAL				TOTAL			

SUMMARY OF CREDITS

REQUIREMENTS	CREDIT HOURS
UNIVERSITY REQUIREMENTS	17
UNIVERSITY ELECTIVES	03
COLLEGE REQUIREMENTS	30
COLLEGE ELECTIVES	04
MAJOR REQUIREMENTS	98
TOTAL	152



College of Health Sciences
School of Nursing
Study Plan
Diploma in Nursing (DN) Program
Effective AY 2024-2025

YEAR ONE									
SEMESTER ONE					SEMESTER TWO				
COURSE CODE	COURSE TITLE	PRE /CO-REQUISITE	CREDIT HOURS	COURSE CODE	COURSE TITLE	PRE /CO-REQUISITE	CREDIT HOURS	COURSE CODE	COURSE TITLE
ARAB100	Arabic Language I		2	ARAB101	Arabic Language II	ARAB100.	2		
ENGL150	English Language I		2	ENGL152	English Language II	ENGL150.	2		
BIOL101	General Biology	Co: BIOL101L	4	ANAT101	Anatomy and Physiology II	Pre: BIOL101 ANAT100 Co: ANAT101L	3		
CHEM107	Fundamentals of Chemistry	Co: CHEM107L	4	ANAT101L	Anatomy and Physiology II Lab	Co: ANAT101	1		
ANAT100	Anatomy and Physiology I	Co: BIOL101 ANAT100L	3	COMP101	Computer Skills	Pre: DL - Digital Literacy, MATH-BP - Basic Pure Mathematics	2		
ANAT100L	Anatomy and Physiology I Lab	Co: ANAT100	1	HIST150	Islamic Civilization		3		
TOTAL			16	TOTAL			13	TOTAL	

YEAR TWO									
SEMESTER THREE				SEMESTER FOUR				SUMMER SEMESTER	
COURSE CODE	COURSE TITLE	PRE /CO-REQUISITE	CREDIT HOURS	COURSE CODE	COURSE TITLE	PRE /CO-REQUISITE	CREDIT HOURS	COURSE CODE	COURSE TITLE
NRSG101	Fundamentals of Nursing	Pre: ANAT100/101 Co: NRSG110L, NRSG100, NRSG101	3	NRSG220	Adult Health Nursing I	Pre: NRSG101/105 Co: NRSG110L, NRSG225, PHRM200, PHRM207L	3	NRSG230	Adult Health Nursing II
NRSG101L	Fundamentals of Nursing Lab	Co: NRSG101	2	NRSG220L	Adult Health Nursing I Lab	Co: NRSG220/220L	1	NRSG230L	Adult Health Nursing II Lab
NRSG105	Fundamentals of Nursing Clinical	Co: NRSG101, NRSG101L, NRSG110L	2	NRSG225	Adult Health Nursing I Clinical	Co: NRSG220, NRSG220L, PHRM200, PHRM207L	3	NRSG235	Adult Health Nursing II Clinical
NRSG110L	Health Assessment Laboratory	Pre: ANAT100/101 Co: NRSG101, NRSG105	2	PHRM200	Pharmacology for Nurses	Pre: NRSG101/105 Co: NRSG110L, NRSG220/225, PHRM207L	3		
NRSG100	Introduction to Nursing Profession	Co: NRSG101	2						
				PHRM207L	Drug Dosage and Calculations Laboratory	Pre: NRSG101/105 Co: NRSG220/225, PHRM200, COMP101	1		
				HINF210L	Health Informatics Laboratory		1		
TOTAL			11	TOTAL			12	TOTAL	
									7

YEAR THREE									
SEMESTER FIVE					SEMESTER SIX				
COURSE CODE	COURSE TITLE	PRE / CO-REQUISITE	CREDIT HOURS	COURSE CODE	COURSE TITLE	PRE / CO-REQUISITE	CREDIT HOURS	COURSE CODE	COURSE TITLE
NRS6340	Maternal & Women's Health Nursing	Pre: NRS6230/23 5 Co: NRS6345 NRS6350/35 5	3	NRS6400	Mental Health Nursing	Pre: NRS6230/23 5 NRS6340 NRS6350 Co: NRS6405	3		
NRS6340L	Maternal & Women's Health Nursing Lab	Co: NRS6340	1	NRS6405	Mental Health Nursing Clinical	Pre: NRS6230/23 5 NRS6340 NRS6350 Co: NRS6400	2		
NRS6345	Maternal & Women's Health Nursing Clinical	Pre: NRS6230/23 5 Co: NRS6340 NRS6350 NRS6355	2	NRS6410	Community Health Nursing	Pre: NRS6340 NRS6350 Co: NRS6400 NRS6415	3		
NRS6350	Child Health Nursing	Pre: NRS6230/23 5 Co: NRS6340/345/NRS635	3	NRS6415	Community Health Nursing Practicum	Pre: NRS6345 NRS6355 Co: NRS6405 NRS6410	2		
NRS6350L	Child Health Nursing Lab	Co: NRS6350	1	MNGT10	Entrepreneurship Creativity and Innovation	Must have completed 45 credit hours	3		
NRS6355	Child Health Nursing Clinical	Co: NRS6340/34 5 NRS6350 NRS6350L	2	NRS6446	Advanced Seminar in Health Sciences		1		
CARC300	Career Counseling	Must have completed 60 credit hours	1						
TOTAL			13	TOTAL			14	TOTAL	

YEAR FOUR									
SEMESTER SEVEN				SEMESTER EIGHT			SUMMER SEMESTER		
COURSE CODE	COURSE TITLE	PRE /CO-REQUISITE	CREDIT HOURS	COURSE CODE	COURSE TITLE	PRE /CO-REQUISITE	COURSE CODE	COURSE TITLE	PRE /CO-REQUISITE
NPEX001	Nursing Professional Examination	Must have completed 86 credit hours	1						
NRSG490	INTERNSHIP	Must have passed the NPFX001	9						
TOTAL			10	TOTAL			TOTAL		

SUMMARY OF CREDITS

REQUIREMENTS		CREDIT HOURS
UNIVERSITY REQUIREMENTS		17
COLLEGE REQUIREMENTS		17
MAJOR REQUIREMENTS		62
TOTAL		96



College of Health Sciences
School of Nursing
Study Plan
Bachelor of Science in Nursing (BSN) Bridging
Effective AY 2024-2025

YEAR ONE											
SEMESTER ONE				SEMESTER TWO				SUMMER SEMESTER			
COURSE CODE	COURSE TITLE	PRE /CO-REQUISITE	CREDIT HOURS	COURSE CODE	COURSE TITLE	PRE /CO-REQUISITE	CREDIT HOURS	COURSE CODE	COURSE TITLE	PRE /CO-REQUISITE	CREDIT HOURS
ANAT100	Anatomy and Physiology I		3	ANAT101	Anatomy and Physiology II		3	PATH200	Pathophysiology	Pre: MSCC100/101	3
ANAT100L	Anatomy and Physiology I Lab	Co: ANAT100	1	ANAT101L	Anatomy and Physiology II Lab	Co: MSCC101	1	BIOL343	Microbiology and Immunology		3
NRSG250	Psychosocial Aspects of Care		2	CHEM334	Biochemistry		3	BSTA300	Biostatistics	Pre/Co: NRSG301	2
NRSG301	Research, Epidemiology and Evidence Based Practice		3	OHCS105	Introduction to the Oman Health Care System		1				
PSCH150	Psychology		3	PHRM200	Pharmacology for Nurses		3				
NRSG425	Global Health		2	MNGT100	Entrepreneurship Creativity and Innovation		3				
TBD	University Elective		3	HINF210L	Health Informatics Laboratory		1				
TOTAL			17	TOTAL			15	TOTAL			8

YEAR TWO									
SEMESTER THREE				SEMESTER FOUR				SUMMER SEMESTER	
COURSE CODE	COURSE TITLE	PRE /CO-REQUISITE	CREDIT HOURS	COURSE CODE	COURSE TITLE	PRE /CO-REQUISITE	CREDIT HOURS	COURSE CODE	COURSE TITLE
NRSG380	Health Education and Promotion		2	NRSG103	Therapeutic Communication		2	NRSG203	Therapeutic Nutrition
NRSG110L	Health Assessment Laboratory		2	NRSG420	Leadership and Management in Health Care		2	TBD	College Elective 3
NRSG370	Gerontological Nursing		3	NRSG320	Professional Issues and Ethics		2	TBD	College Elective 4
NRSG450	Critical Care Nursing		2	NRSG375	Advance Clinical Nursing Practicum		6		
NRSG104L	First Aid and Basic Life Support Laboratory		1	TBD	College Elective 1		2		
NRSG444	Graduation Project	Pre: NRSG301 BSTA300	6	TBD	College Elective 2		2		
TOTAL			16	TOTAL			16	TOTAL	
									6

SUMMARY OF CREDITS

REQUIREMENTS	CREDIT HOURS
UNIVERSITY REQUIREMENTS	03
UNIVERSITY ELECTIVES	03
COLLEGE REQUIREMENTS	22
COLLEGE ELECTIVES	08
MAJOR REQUIREMENTS	42
TOTAL	78

2.3 Nursing Courses

OLD CURRICULUM COURSES

NURS 180 Anatomy and Physiology I (3 credits)

This course provides an introduction to human morphology and function at the cell, tissue and organ system level of organization. The human body is dealt with as separate systems with understanding of their structure and functions. In this course the haemopoetic, immune, cardiovascular respiratory and integumentary systems are dealt with.

NURS 190 Anatomy and Physiology II (3 credits)

This course is the continuity of Anatomy and Physiology I. The foci of this course are the structure and functions of the nervous system; sense organs; endocrine glands; gastrointestinal, renal, musculoskeletal, and reproductive systems.

BIOL 200 Microbiology & Immunology (3 credits)

This course is an intermediate level introduction to the theory and practice of microbiology and immunology. In microbiology the major groups of microbes are discussed and basic laboratory techniques are applied in the detection and culture of fungi, bacteria and viruses. Microbiology also covers the health risks associated with exposure to these organisms and the concepts of sterilization, disinfection and universal precautions. Immunology focuses on the human body's defenses against pathogens. The various types of body defenses, how antigens affect the body, the functions of antibodies, the concept of immunity and immunization are described.

NURS 460 Community Health Promotion (2 credits)

This course introduces to the students a comprehensive, systematic, coordinated approach to affecting long-term health behavior change by influencing the community (cultural) norms through education and community organization. Emphasis will be on the use of the phases of community health promotion.

NURS 203 Applied Nutrition (3 credits)

The focus of this course is the importance of nutrition in maintaining wellness. The course content includes essential nutrients for health; factors that influence nutrition; risk factors for malnutrition; clinical signs of malnutrition; nursing interventions to promote optimal nutrition; and nursing interventions for clients with nutritional problems.

PHRM 300 Pharmacology for Nurses (3 credits)

This course focuses on the knowledge and skills necessary for the safe administration of drugs. Students will learn pharmaco-dynamics, pharmacokinetics, drug classification, drug interactions and toxicities. Emphasis will be given on the legal implications of drug administration and the nursing responsibilities.

NURS 200 Pathophysiology (3 credits)

This course focuses on the pathophysiological processes of various diseases and their effects on the organs and systems of the human body.

NURS 465 Epidemiology (2 credits)

The focus of this course is on epidemiological principles in the examination of disease patterns and disabilities among populations. In addition, an introduction to the interpretation of vital statistics, the critique of cross-sectional, case-control and cohort design, and the principles of screening will be discussed

STAT 101 Introduction to Statistics (4 credits)

This course describes statistics and its use; sources of data (internal and external data); types of data (nominal, ordinal, interval, and ratio); statistical terminologies (population, population characteristics, sample, population census, sampling and no-sampling errors, and variables); obtaining data; descriptive statistics. Summarizing and presentation of data (frequency tables, graphs, and scatter plots). Measures of central tendency (mean, median, mode); grouped and non-grouped data. Measures of variability, standard deviation, range, skewness measure (grouped and non-grouped data. Quartiles and percentiles, definition of probability, random variables and their distributions. Simple application of binomial and normal distributions. Simple indices, rates and scatter plots and simple linear regression.

NURS 440 Professional Issues & Ethics (3 credits)

This course focuses on legal and ethical considerations in the nursing profession as well as professional issues relevant to the practice of nursing for the professional nurse and the nursing profession. It examines the legal aspects of nursing, and theories of ethics. Students explore ethical dilemmas. Students are assisted to engage critically with related questions, issues, and concerns that create tensions in nursing practice. Considerations are given to the social and political contexts of health care. Students are encouraged to incorporate a developing critique of professional processes.

NURS 210 Health Information Management System (2 credits)

This course is designed to provide students with a basic understanding of the Ministry of Health (MoH) policy and planning concerning using the electronic patient file. The students will learn the basic functions of the Hospital Information Management System (HIMS) and its main application modules (subsystems). The students will be introduced to the features of each subsystem mainly those modules that are linked with the nursing module. The major focus of this course will be on the nursing module. The course will equip students with essential skills needed to use the nursing module. It will allow students to enter patient data and information kardex. The students will learn the process of creating indent template, creating a query based on a single or multiple criteria and prepare a duty roster. The course will be totally laboratory based with students being guided through a series of computer-based lessons and additional learning task sheets. All data sets used in this course are simulated cases and are not specific to a known patient or location. They are developed to help students interact with the system in an effective way. Theoretical concepts will be integrated where appropriate. Whenever possible materials used will integrate and reinforce learning in other courses.

EDUC 360 Methods of teaching for Health Professions (2 credits)

This course focuses on the theories of teaching, teaching strategies and processes. The methods of evaluating information giving are included. Particular attention will be given to the education requirements of nurses in the Sultanate of Oman.

NURS 490 Nursing Research (3 credits)

In this course the students are taught the steps in the research process for the proposal or conduct of circumscribed nursing research project.

The content includes determining the research question/hypothesis; literature review; research methodologies; data collection; data analysis; etc.; the students will be guided in acquiring the skills for evaluating research reports.

NURS 491 Graduation Project (3 credits)

The students are guided in the identification of a relevant nursing problem. Systematic observations of events will be carried out using relevant quantitative or qualitative methods. Each step of the project should be discussed. The work will be documented in the form of a paper organized in a conventional scientific way.

NURS 101 Foundation of Nursing I (3 credits)

This course is an introduction to the fundamentals of nursing practice (hygiene care, taking vital signs, positioning, etc). The concepts basic to the discipline and practice of nursing are taught together with the psychomotor skills that the students must master.

NURS 106 Foundation of Nursing II (3 credits)

This course consists of higher level fundamental skills of nursing practice (drug administration, administration of IV fluids, asepsis, dressing, etc). The concepts basic to the discipline and practice of nursing are taught together with the psychomotor skills that the students must master.

NURS 110 Health Assessment (3 credits)

The aim of this course is to develop the students' skills in gathering, organizing and presenting health data. The steps in the nursing process are used, data collection, planning, intervention and evaluation of nursing interventions. Emphases are also given on the skills of taking a health history, conducting a physical assessment and formulating nursing diagnoses/nursing problems.

NURS 220, NURS 225 Adult Nursing I (3 credits), (3 credits)

In these courses, students are introduced to the adult clients with alterations in health status. It is designed to guide students in the care of adults with medical /surgical problems. Students are taught to examine terminologies, pathophysiology of cases, specific diagnostic procedures and medical management (medications and surgical interventions)

for each specific alteration in health status. The students will be exposed to the techniques of health education, motivation and teaching methodologies to adults and their families. The nursing process will be used as a framework to formulate nursing diagnoses and to identify nursing interventions. The interventions are directed toward promoting, maintaining and restoring the health of adults with altered health status. The following disorders/conditions will be dealt with:

- Cardiovascular
- Respiratory
- Renal
- Urological
- Gastrointestinal
- Endocrine

NURS 230, NURS 235 Adult Nursing II (3 credits), (3 credits)

In these courses, students are introduced to the adult clients with alterations in health status. It is designed to guide students in the care of adults with medical /surgical problems. Students are taught to examine terminologies, pathophysiology of cases, specific diagnostic procedures and medical management (medications and surgical interventions) for each specific alteration in health status. The students will be exposed to the techniques of health education, motivation and teaching methodologies to adults and their families. The nursing process will be used as a framework to formulate nursing diagnoses and to identify nursing interventions. The interventions are directed toward promoting, maintaining and restoring the health of adults with altered health status. The following disorders/conditions will be dealt with:

- Hematological
- Immunological
- CNS
- Special senses
- Musculoskeletal
- Dermatological
- Oncological

NURS 330 Mental Health Nursing (3 credits)

This course addresses the concepts of mental health and mental health problems. The various types of mental health problems, their causes, treatment and nursing management will be addressed. Non-invasive/non-drug therapies and the nursing implications, and client/patient education will also be addressed.

NURS 335 Mental Health Nursing – Clinical (3 credits)

This course is the integration of knowledge to practice. Students will be guided to apply the knowledge they have learnt and develop the skills required in the care of clients/ patients with mental health problems. The nursing process will be applied in the care and management of clients/ patients with mental health problems.

NURS 340 Maternal & Women's Health (3 credits)

This course focuses on the study of women during different cycles of their lives including childbearing, child rearing and menopausal periods. The content includes reproductive health, motherhood, and care of the mother during preconception, conception, antenatal, postnatal periods and care of the newborn. In addition the content includes prevention of conception, problems of conception (infertility), sexually transmitted diseases and health education, and menopause

NURS 345 Maternal & Women's Health – Clinical (3 credits)

This course is the integration of knowledge to practice. Students will apply the knowledge they have learnt and develop the skills required in the care of women. The nursing process will be applied in the care and management women throughout the life cycles.

NURS 350 Child Health Nursing (3 credits)

This course introduces the students to the concepts of child health/ pediatric nursing that should enable them to develop their skills in the care of sick children. The course commences with the developmental milestones of children, care of hospitalized children and the nursing implications of administering drugs to children. These are followed by care of children with alterations in health status according to the various body systems.

NURS 355 Child Health Nursing – Clinical (3 credits)

This course is the integration of knowledge to practice. Students will apply the knowledge they have learnt and develop the skills required in the care of sick children. The nursing process will be applied in the care and management of sick children

NURS 370 Critical Care Nursing (3 credits)

This course introduces the students to the theory and practice of critical care nursing. The focus is on the care of critically ill individuals in the Accident and Emergency Unit (A&E Unit), Intensive Care Unit (ICU), Coronary Care Unit (CCU), Burns Unit, Renal Dialysis Unit and Neonatal Intensive Care Unit (NICU).

NURS 375 Critical Care Nursing – Clinical (3 credits)

This course is the integration of knowledge to practice. Students will apply the knowledge they have learnt and develop the skills required in the care of critically ill patients. The nursing process will be applied in the care and management of critically ill patients in the Accident and Emergency Unit (A&E Unit), Intensive Care Unit (ICU), Coronary Care Unit (CCU), Burns Unit, Renal Dialysis Unit and Neonatal Intensive Care Unit (NICU).

NURS 380 Psychosocial Aspect of Care (1 credit)

This course introduces the students to the application of the concepts of psychology, sociology and spirituality in nursing practice. The physical, psychological, sociological and spiritual effects of illness and hospitalization are discussed. This will enable them to care for clients/patients from a holistic perspective. Vital to the art of providing effective and appropriate nursing care is the students' abilities to learn to convey understanding, sensitivity and compassion to the clients/patients.

NURS 410 Community Health Nursing (3 credits)

This course provides theories and practices essential to the assessment, planning, implementation and evaluation of the individuals, families, groups and community at different stages of their lives. Emphasis will be on the study and application of nursing roles inherent in community health nursing for health promotion and protection as well as disease prevention based on the concepts of primary health care. Students will be introduced to theoretical concepts related to community health status, environmental health safety, promoting and protecting the health of women, infants, children, adolescents, adult, elderly and working populations. Epidemiological assessment for the purpose of promotion and protection through controlling of communicable and non communicable diseases are also introduced. Other relevant topics include community empowerment, social sustainable development and voluntary participation.

NURS 415 Community Health Nursing – Practicum (3 credits)

The course guides students with opportunities to observe, participate and function independently using nursing skills and techniques related to health promotion, health maintenance and health restoration as well as disease prevention when providing care for the target groups in the primary health care settings. Settings include clinics, homes, schools and factories, etc. The nursing process will be utilized throughout the provision of care at all three levels of prevention.

NEW CURRICULUM COURSES**HSCR100 Anatomy and Physiology 1 (3 credits)**

Anatomy and Physiology is a two-part course that will provide an introduction to gross anatomy and function of the human body. It will examine the body at the cell, tissue and organ system level of organization. The human body is dealt with as separate systems with understanding of their structure and functions in maintenance of homeostasis. This level one course is essential in the foundation for pathophysiology and other relevant clinical subjects. Concepts in Anatomy and Physiology-I includes the orientation to human body, cells, tissues, integumentary system, skeletal system, muscular system, nervous system and special senses

HSCR100L Anatomy and Physiology 1 Laboratory (1 credit)

This is the laboratory component of Anatomy and Physiology I. It is aimed to enhance the students' knowledge on concepts discussed in the theory part. It will examine the body at the cell, tissue and organ system level of organization. Laboratory activities are focused on helping the students get familiar with the human body structure and function. Concepts in Anatomy and Physiology-I includes the orientation to human body, cells, tissues, integumentary system, skeletal system, muscular system, nervous system and special senses.

HSCR101 Anatomy and Physiology II (3 credits)

Anatomy and Physiology is a two-part course that will provide an introduction to gross anatomy and function of the human body. It will examine the body at the cell, tissue and organ system level of organization. The human body is dealt with as separate systems with understanding of their structure and functions in maintenance of homeostasis. This level one course is essential in the foundation for

pathophysiology and other relevant clinical subjects.

Concepts in Anatomy and Physiology-II include the endocrine system, hematopoietic system, cardiovascular, lymphatic and immune system, respiratory system, digestive system, urinary system and reproductive system.

HSCR101L Anatomy and Physiology II Laboratory (1 credit)

This is the laboratory component of Anatomy and Physiology II. It is aimed to enhance the students' knowledge on concepts discussed in the theory part. It will examine the body at the cell, tissue and organ system level of organization. Laboratory activities are focused on helping the students get familiar with the human body structure and function.

HSCR105 Introduction to Oman Health Care System (1 credit)

This course introduces the students to the healthcare systems under the Ministry of Health (MOH) and other healthcare systems in Oman. This course also provides the students with basic concepts of health, determinants of health, wellness-illness continuum, primary health care and levels of prevention. In addition, it explains the functions of different international organizations which have active role in Oman healthcare system.

NRSG100 Introduction to the Nursing Profession (2 Credits)

This course is designed to introduce students on the basic concepts of nursing. It focuses on the theoretical concepts related to nursing and the nursing profession, educational nursing programs, overview of the nursing process and evolution of nursing. Emphasis will be given on the roles of nurses in client care and the ethical and legal aspects of care. Other relevant topics include critical thinking and decision making

NRSG101 Fundamentals of Nursing (3 Credits)

This course introduces the fundamental nursing concepts and skills essential in the development of competencies in addressing the needs of clients throughout the lifespan. Utilizing the nursing process, students are taught holistic approach in the provision of safety and comfort and in meeting the clients' cognitive, interpersonal, developmental, psychosocial and psychomotor needs.

NRSG101L Fundamentals of Nursing Laboratory (2 Credits)

This is the laboratory component of NRSG101. The course introduces the basic nursing concepts and skills critical in the development of essential competencies in meeting the health care needs of individuals throughout the lifespan. Utilizing the nursing process and the application of evidence-based practice, students are taught to develop their interpersonal, psychosocial and psychomotor skills.

NRSG103 Therapeutic Communication (2 Credits)

This course prepares students to gain basic knowledge and skills in therapeutic communication essential in providing safe and effective patient care. It includes the development of effective communication skills, verbal and non-verbal communication techniques and common communication barriers. Concepts on how to establish therapeutic relationship with clients in collaboration with other members of the health care team and communication with diverse patients will also be emphasized

NRSG105 Fundamentals of Nursing Clinical (2 Credits)

This course introduces the fundamental nursing skills essential in the application of competencies and nursing process by promoting safe clinical practice. Students are enhanced to develop their interpersonal, psychosocial and psychomotor skills in the health care facility

NRSG203 Therapeutic Nutrition (2 Credits)

This course introduces the students to the basic concepts of nutrition and its application to real life clinical situations essential in maintaining the wellness states of clients with known health conditions. The basic knowledge on nutrition principles and clinical dietary approaches will prepare students to develop effective nutritional interventions appropriate to help attain the nutritional needs of clients with known disease conditions.

NRSG220L Adult Health Nursing I Laboratory

In this course, students are introduced to the laboratory skills and procedures that the students need to master in the care of adult clients with medical-surgical problems.

Systematic presentation of skills and procedures are based on the following body systems:

- Cardiovascular

- Respiratory
- Gastrointestinal
- Endocrine
- Renal
- Genito-urinary

NRSG225 Adult Health Nursing 1 Clinical (3 Credits)

This course is the clinical application of the concepts and skills learned in the classroom and skills laboratory that enable the students in the care of adult clients with medical and surgical conditions affecting the following systems

- Cardiovascular
- Respiratory
- Gastrointestinal
- Endocrine
- Renal
- Genito-urinary

The students are exposed in various health settings where they are given the opportunity for experimental learning. The utilization of nursing process as framework in the care of adults is emphasized.

NRSG230 Adult Health Nursing II Theory (3 Credits)

In this course, students are introduced to the adult clients with alterations in health status. It is designed to guide students in the care of adults with medical/surgical problems. Students are taught to examine terminologies, pathophysiology of cases, specific diagnostic procedures and medical management (medications and surgical interventions) for each specific alteration in health status. The students will be exposed to the techniques of health education, motivation and teaching methodologies to adults and their families. The nursing process will be used as a framework to formulate nursing diagnoses and to identify nursing interventions. The interventions are directed toward promoting, maintaining and restoring the health of adults with altered health status.

The following disorders/conditions will be dealt with:

- Central nervous system and Special senses
- Musculoskeletal
- Hematological
- Dermatological
- Immunological
- Oncological

NRSG230L Adult Health Nursing II Lab (1 Credit)

In this course, students are introduced to the adult clients with alterations in health status. It is designed to guide students in the care of adults with medical/surgical problems. Students are taught to examine terminologies, pathophysiology of cases, specific diagnostic procedures and medical management (medications and surgical interventions) for each specific alteration in health status. The students will be exposed to the techniques of health education, motivation and teaching methodologies to adults and their families. The nursing process will be used as a framework to formulate nursing diagnoses and to identify nursing interventions. The interventions are directed toward promoting, maintaining and restoring the health of adults with altered health status.

The following disorders/conditions will be dealt with:

- Central nervous system and Special senses
- Musculoskeletal
- Hematological
- Dermatological
- Immunological
- Oncological

NRSG235 Adult Health Nursing II Clinical (3 credits)

This course is the clinical application of the concepts and skills learned in the classroom and skills laboratory that enable students in the care of adult clients with medical and surgical conditions affecting the following systems:

- Central nervous system and Special senses
- Musculoskeletal
- Hematological
- Immunological
- Dermatological
- Oncological

The students are exposed in various health settings where they are given the opportunity for experiential learning. The utilization of nursing process as framework in the care of adults is emphasized.

NRSG250 Psychosocial Aspect of Care (2 Credits)

This course introduces the students with an outline of physical, psychological, social, spiritual and cultural aspects of wellness and

illness. Coping strategies during hospitalization in caring for clients and their families are also emphasized. This will enable the students to assist clients in maintaining psychosocial integrity through the use of nursing process.

NRSG310 Counseling (2 Credits)

This course introduces the students to the theory/knowledge of counseling; the characteristics of an effective counselor; theories and techniques of counseling; the stages and processes of counseling; the problems faced by beginning counselors; and the application of counseling techniques in nursing practice. Students will be guided in the development of beginning skills in counseling

NRSG320 Professional Issues & Ethics (2 Credits)

This course synthesizes legal aspects and theories of ethics related to the practice of nursing profession. The learners will identify and analyze diverse legal and ethical concepts applicable to the standards of nursing practice and examine ways in which ethical decision-making models could be applied to a variety of dilemmas that are raised in providing safe and competent patient care

NRSG380 Health Education and Promotion (2 Credits)

This course introduces the fundamental nursing concepts and skills essential in the development of competencies in addressing the needs of clients throughout the lifespan. Utilizing the nursing process, students are taught holistic approach in the provision of safety and comfort and in meeting the clients' cognitive, interpersonal, developmental, psychosocial and psychomotor needs.

NRSG420 Leadership and Management in Health Care (3 Credits)

This course introduces students to the concepts of leadership and management in nursing service. The theories of leadership and management will be discussed including the functions of management. The roles and skills required of the nurse managers will be emphasized. Leadership roles and management functions associated with ethics and law will be highlighted.

NRS430 Trends and Issues in Nursing (2 Credits)

This course introduces students to the major issues and trends in contemporary nursing and healthcare practice. The course explores the current national and international trends influencing nursing such as professional credentialing, workforce and workplace challenges, nursing's professional organizations, advocacy role of professional nurse, evolving trends of EBP and other current issues of interest in nursing education, leadership and practice.

NRS440 Clinical Decision Making in Nursing Practice (2 Credits)

This course introduces the students to problem solving, decision making and critical thinking skills in the provision of safe nursing care, and pursuing professional, personal, ethical, legal growth and development. Emphasis is placed on the student functioning within the four roles of nursing, being accountable and responsible for providing competent nursing interventions based on application of the nursing process, and demonstration of critical thinking, independent judgment, and self-reflection while caring for clients and their families.

PHRM100L Drug Dosage and Calculation Laboratory (1 Credit)

The course introduces nursing students the concepts of drug dosage and calculations to develop the student's skills in accurately calculating usual drug dosages and solution preparations prescribed for their clients for safe administration. Contents included are conversions; oral and parenteral dosage calculations for pediatric and adult patients; and intravenous infusion rates. A brief overview of medication order and drug label interpretation will be included as well. In order to develop proficiency, students will be engaged in many practice exercises and assessments on drug calculations with emphasis on accuracy. The student is required to master proficiency in drug calculation before he/she will be allowed to administer medication to clients.

PHRM200 Pharmacology for Nurses (3 Credits)

This course focuses on the basic concepts of pharmacodynamics and pharmacokinetics of common drugs used in the healthcare settings. It also includes classification, interaction and toxicities of the different drugs. It highlights the legal implications and the use of the nursing process in carrying out nursing responsibilities to ensure safe administration of drugs.

PSCH150 Psychology (3 Credits)

The course is to introduce the students to the discipline of psychology and its development, terminologies, approaches, the various branches of psychology and theories of human development. Psychological concepts such as emotion, perception, motivation, intelligence, memory, learning, growth and development throughout the lifespan, and personality theories will be dealt with. The application of psychology in the real-life situation prepares the students to promote psychosocial health of the clients.

Nursing Professional Examination (NPEx001)**Nursing Professional Examination (NPEx002)**

SECTION III

POLICIES AND PROCEDURES

3.1 Selected University Policies

Nursing students are expected to familiarize themselves with all University of Nizwa policies that are found within the University of Nizwa Student Guide.

Registration Procedures

Students Should:

1. Discuss registration program with advisors **PRIOR** to registration.
2. Get **PERMISSION** to start registration through Eduwave from **ADVISOR**.
3. **SUBMIT** the registration application within **TWO** days. Non submitted registration will be cancelled automatically.
4. Follow up the advisor for **APPROVAL** soon afterwards and discuss problems arising.
5. Complete the registration process within the **ANNOUNCED PERIOD**.
6. Registration in **ADD & DROP** Period is **NOT** allowed for those students who did not register during the registration period, and a fee will be applicable for all the Late Registrations. (75. R.O)
7. For those students who did not submit their registration or get the required approval their name **WILL NOT** appear in the **LIST OF THE INSTRUCTOR**.
8. Contact their respective College Coordinator or the **ASSISTANT DEANS** for the Acting Advisors replacing those Advisors who are not available during that period in the University because of the Annual Vacation.

FINAL EXAMINATION GUIDELINES**Examination Instructions****(For Students)**

1. Students shall carefully follow the instructions in the answer booklet and examination question paper.
2. Students are required to be seated and silent while doing the examination.
3. Students who are at least thirty minutes (30) late shall not be allowed to enter the examination hall or room.
4. Students shall not exit the examination room during the first thirty minutes (30) or the last ten
5. (10) minutes of the examination period.
6. Students who have already submitted their answer booklet and left the examination hall or room shall not be permitted to return for any reason.
7. Once seated, the students shall fill in the required information on their “Answer Booklet” and write their name on the question paper (if required).
8. Students are required to sign the attendance sheet given by the invigilators.
9. Students shall present their valid, clear and undamaged UoN identification card (ID) to the invigilator as proof of identity for attendance.

If students fail to show the UoN ID, they shall be asked to leave the examination hall. Alternatively, students shall be allowed to present their original passport, driving license, or national ID (resident card), if they fail to show their UoN ID. Subsequently, the matter shall be reported to the College Assistant Dean for Undergraduate Studies (ADUGS).

In such instances, the student shall be given an Incomplete (IC) grade for the corresponding course(s), with the condition that a valid UoN ID shall be presented within seven (7) days.

Students’ belongings, whether relevant to the examination or not, shall be placed according to the instructions given by a Chief Invigilator.

10. If a student unintentionally brings revision notes or any other prohibited material into the examination room or hall, they must hand them over to the invigilator before the examination starts. No disciplinary action shall be taken in such situations.
11. All smart devices (e.g., mobile phones, smart watches, earbuds, air pods, or any other Bluetooth device, etc.) shall be surrendered to the Chief Invigilator before the examination begins.
12. Any student found during the examination period with any smart device (e.g., mobile phones, smart watches, earbuds, air pods, or any other Bluetooth device, etc.), even if it is switched off, shall be treated

as a cheating offense which shall result in a zero (0) score in the examination, and the student shall leave the examination room/hall/session immediately.

13. Students shall not take any examination papers, rough notes, or materials owned by the University of Nizwa and provided for use in the examination. These items shall be returned to the invigilator at the end of the examination.
14. Students shall answer in the required course language and use blue or black ink unless stated otherwise. The use of a pencil and red or green pen is not allowed.
15. Programmable calculators and electronic dictionaries are allowed in the examination room or hall, only if they are permitted by the invigilator.
16. To cancel written solutions, students may cross them out and write 'CANCELLED' above them. Cancelled solutions shall not be marked even if the content is correct.
17. Students shall refrain from speaking or interacting non-verbally with anyone except the invigilator while doing an examination. They must not assist others or communicate willingly with them.
18. Students shall refrain from cheating or assisting other students to cheat during an examination. Instances of cheating includes reaching to mobile phone and personal bag/belonging, looking around to obtain answers, whispering to any student, using cheat sheets, switching examination papers, making unnecessary hand gestures, employing prearranged signals or code words to indicate answers, speaking in a language that the invigilator cannot understand and engaging in coordinated efforts, such as passing notes or answers across rows, etc.
19. Students attempting to cheat shall receive a verbal warning. The invigilator shall also put a note on the front page of their answer booklet and relocate them to a different seat.
20. If the student tries to cheat again, it shall be regarded as cheating.
21. Any case of cheating shall result in the student being requested to leave the examination hall, and the Chief Invigilator shall record the incident on the Student Examination Incident Report Form [Document Reference No.: UON/AA-GUI-001/FORM-001/V3/2024].
22. A student caught cheating or helping others to cheat shall be penalized with a zero mark in the examination and/or suspension from the University of Nizwa in accordance with the University Student Academic Misconduct Policy [Document ReferenceNo. UON/AA-POL-007/V3/2021].
23. 23. Students whose behavior is deemed by the invigilators as disruptive to others or interfering with the smooth conduct of the examination shall be asked to leave the examination room.
24. Students may be instructed to change seats at any time and shall follow the invigilator's instructions without delay and in silence.
25. Students are prohibited from smoking or eating in any examination room.

3.2 School of Nursing Policies

Admission to the Nursing Major

Screening Criteria for Non-performing Nursing Major Students

A. Pre-Entry (into Nursing Major)

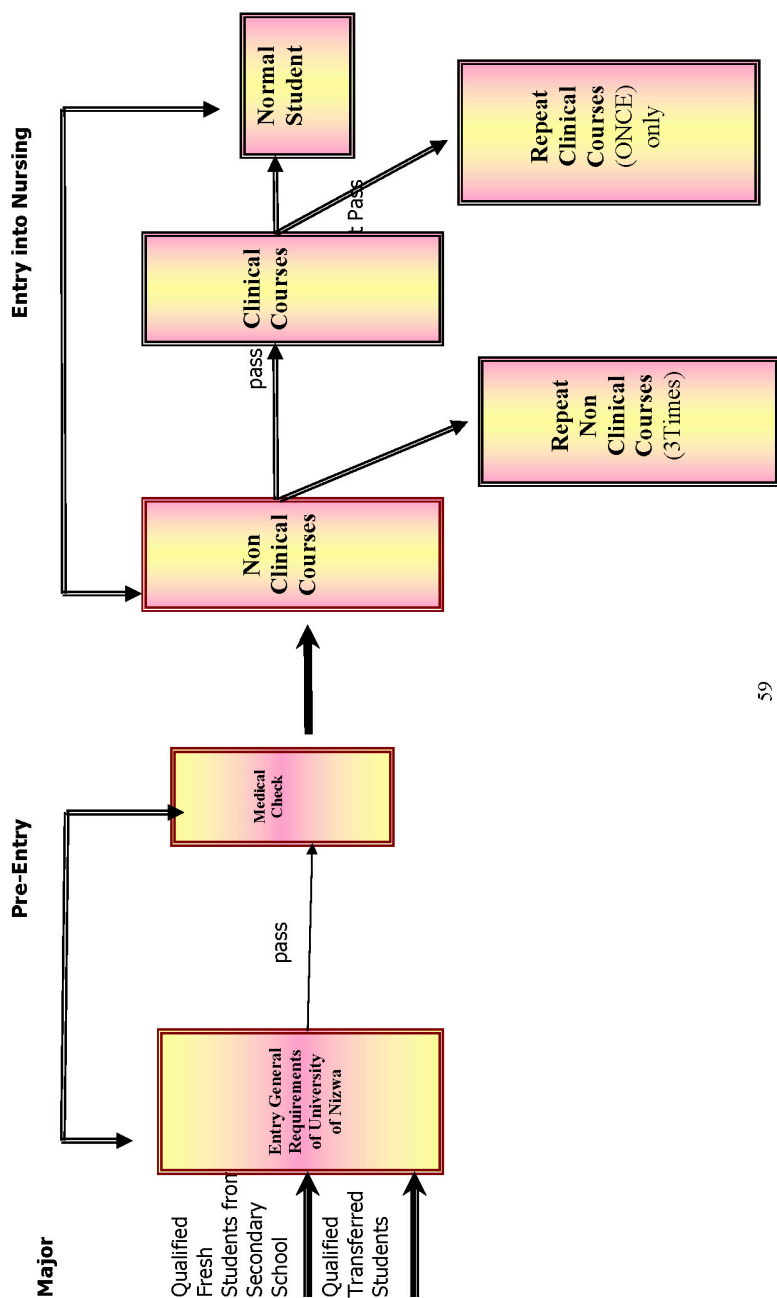
1. Student must meet entry **REQUIREMENTS** of University of Nizwa.
2. Student has to go through a **MEDICAL CHECK UP** and must be physically fit to take up Nursing major

B. Entry into Nursing Major

1. **STUDENT MUST PASS ALL COURSES. STUDENT WHO FAILS CLINICAL OR THEORY FOR A CLINICAL COURSE MUST REPEAT BOTH THE THEORY AND CLINICAL COMPONENTS.**
2. The maximum recommended length of study for BSN student is **6 YEARS**. The recommended length of study FOR DN student is **5 YEARS**. Should a student continue to fail after exhausting the recommended duration of study he/she will be asked to withdraw.
3. The student must maintain a **CGPA of 2.0** in all semesters.

For more details, see the flow sheet about Procedure of Entry into Nursing Major on page 44

Procedure of Entry into Nursing Major



Academic Advising

1. Students will be assigned academic advisors after successful completion of the qualifying English language and science requirements.
2. Academic advisors are entrusted with the responsibility of helping students to:
 - Handle and abide by the study plan and get high averages.
 - Develop a balanced character.
 - Assisting students in providing them with a set of guides that explain the multi-faceted university life.

These specialized guides are distributed during the orientation week and can be obtained from the Deanship of Record and Registration.

Attendance: Lectures and Clinical (to be updated)

Class Attendance Policy- THEORY

Course instructors would keep attendance records. An “Absentee Warning notice will be issued if a student is absent:

- 5% -9% of the total semester contact hours. **(WARNING 1).**
- 10-14% of the total semester contact hours **(WARNING 2).**
- 15% or more of a course **(DROP ONE LETTER GRADE).**
- 25% of the course contact hours. **(BARRED FROM FINAL EXAMINATION)**
- The Notice must be signed by **COURSE INSTRUCTOR** and **ASSOCIATE DEAN FOR NURSING**. A copy of Warning Notice is forwarded to **DEANSHIP OF RECORD AND REGISTRATION** and **STUDENT’S ADVISOR**.

Laboratory Attendance Policy

The following attendance and absence scheme is adopted from the College of Health Sciences General Guidelines for Laboratory Attendance [Document Reference Number UoN/AA-CHS-GUI-002/V1/2024]

1. Students are required to attend 100% of all laboratory sessions.
2. Students arriving more than 10 minutes late will be marked as absent for that session.
3. Any student who fails to complete the make-up session(s) for valid reasons shall receive an “IC” grade for the laboratory course and must complete the make-up session(s) before the end of the following semester.
4. Students who miss a scheduled make-up lab session due to a valid reason may rebook another make-up session.

5. The maximum number of sessions a student can book a makeup session for is four (4) per laboratory course.
6. If a student misses a booked make-up session without a valid reason, they may rebook the session; however, this will result in a one-letter grade deduction for the course.
7. A student who misses a rebooked make-up session twice, without a valid reason, will receive an “F” grade for the course.

Clinical Attendance Policy

The following attendance and absence scheme is adopted from the College of Health Sciences General Guidelines for Clinical/Industrial Training [Document Reference Number UoN/AA-CHS-GUI-001/V1/2024]

1. **Work Schedule:** Students are expected to work five days per week, with two days off, or according to the specific monthly schedule of the host training site.
2. **Attendance Log:** Students must accurately complete their attendance log book each day.
3. **Punctuality:** Students arriving more than 10 minutes late will be marked as absent.
4. **Break Time:** Students are permitted a 30-minute break during the training day.
5. **Absence Compensation:**
 - **Any absences** during clinical placement must be compensated. However, any “drop one grade” due to absences will not be reversed by compensating for those absences.
 - Students with **25% absences** are ineligible for compensation and will be considered to have failed the course.
 - **Unexcused Absences:** One unexcused absence requires two days of compensation, with an additional training fee of OMR 15 per week, scheduled during the semester break.
 - **Excused Absences:** One excused absence requires one day of compensation without additional fees, also during the semester break.
 - **Incomplete Grade (IC):** Students with pending compensation for absences will receive an “IC” grade. If the “IC” grade is for a prerequisite course, the student will be prevented from registering for subsequent courses.

Attendance shall be taken during the lecture. The student who does not attend any on-campus/online lecture shall be considered absent.

Absence During Examination Day

Any student who **MISSED** an examination will be subject to the following regulations:

1. **APPROVAL** to sit for the missed examination will be at the discretion of the **ASSOCIATE DEAN, SCHOOL OF NURSING**.
2. The student must present a **LEGITIMATE REASON** (e.g. Medical Certificate for hospitalization/genuine illness, death certificate of an immediate family member, etc).
3. **MAXIMUM MARK** awarded will be a pass mark (60%).

CLINICAL GUIDELINES

VI. PROCEDURE

Students shall attend the orientation on the clinical/industrial training guidelines at the beginning of each semester before the start of the activity. A Clinical/Industrial training contract (see Appendix) shall be signed by students upon completion of the orientation session. Students who failed to sign the training contract are not allowed to proceed with their training.

VII. GUIDELINES

VII.1. ETHICS/PROFESSIONALISM

1. Students shall maintain patient confidentiality at all times by not giving any personal health information of client/medicinal product-related information to others.
2. Students are not allowed to print/take a photo of the client's file/instruments or equipment in the industry. They are to copy necessary information for their learning purpose (case study/presentation) directly from the computer (HIMS®/AL-SHIFAA®/from the training site only after obtaining permission from the authorized staff.
3. Students are not allowed to take any form of photo in the clinical/training areas without obtaining official permission from the authority of the concerned institution.
4. Effective use of time
 - Unnecessary gathering of the students in the assigned area is prohibited.
 - Assigned task/s should be completed on time.
5. Mobile phones are not allowed during training time except for emergency purposes.
6. Students should always maintain a professional relationship with patients and healthcare staff.
 - Students should not entertain personal requests/errands of the clients/caregiver.
 - Avoid sharing personal information to their clients or family members.
7. Students should respect clients, caregivers, healthcare personnel, and

colleagues.

8. Students should report to their clinical instructor/preceptor any untoward incident/event arising during clinical hours.
9. Students should avoid boisterous laughter or loud discussions in front of the clients or members of the health care team.
10. Students are reminded to be courteous while communicating with others. Rude or abusive language to patients and/or staff personnel is prohibited.
11. Interns/students are held accountable for any real/potential threat to the patient. This includes skills previously learned. If the instructor prevents an error, the Intern is still at fault.
12. Students are not allowed to perform clinical procedures/activities without the supervision of a clinical instructor/preceptor.
13. Students must adhere to the Ministry of Health (MoH)/training site policies relevant to their practice.

VII.2. DRESS CODE

Students are expected to wear the prescribed uniform by the College:

For Female Students:

1. Cover the head adequately without hair extensions with a plain white scarf that is properly tucked for nursing students and a typical scarf for non-nursing students.
2. Light makeup is allowed.
3. Nails should be trimmed short without nail polish.
4. No jewelry/accessories shall be allowed except a wedding ring.
5. The length of the tunic/lab coat should be below knee level.
6. The pants should be loose and at ankle level.
7. The University ID should always be appropriately worn on a clip (no lanyard allowed).
8. Light perfume is allowed.

For Male Students:

1. Hair should be neatly combed and trimmed close to the nape.
2. The beard should be tidy and clean.
3. Nails should be cut short.
4. No accessories shall be allowed except for the wedding ring.
5. The shirt/lab coat should be below the waist (mid-thigh).
6. The pants should be loose and at ankle level.
7. The University ID should always be appropriately worn on a clip (no lanyard allowed).

VII.3. ATTENDANCE & PUNCTUALITY

1. Students should report to and leave the clinical area/training site on time. Students should be at their designated assembly point on time.
2. Male students are allowed to use their vehicles for transportation.

3. Female students are allowed to use their transportation provided they shall return to their residence after the training session.
4. Students who report late for more than 10 minutes shall be considered absent. Tardiness shall be reflected in punctuality in the clinical evaluation.
5. Submission of clinical requirements/assignments should be on time. University Assessment Policy shall be applied.
6. Students are allowed to have a 30-minute break.
7. Attendance is compulsory. The Student Attendance & Excused Absence Policy [Document Reference No. UoN/AA-001/POL/V1/2013] or its latest version shall be applied.
8. Any absences incurred during clinical placement must be compensated. Any “drop one grade” due to absences, as stated in the UON attendance policy, shall not be affected by the replacement of absences (makeup duty). Moreover, a student who incurs 25% of absences shall not qualify for a makeup duty/compensation and shall be considered failed in the course.
9. One (1) unexcused absence is equivalent to two (2) days of makeup duty/compensation with payment of the additional training fees (OMR 15/week) during the semester break.
10. While an excused absence is equivalent to one (1) day of makeup duty without payment during the semester break.
11. The Assistant Dean for Training and Society Services shall validate the medical certificate. Social reasons shall be validated by the Deanship of Students Affairs and Community Services
12. A student who incurred absences and who is scheduled for a makeup/compensation duty shall be awarded an “IC” grade. UON policy on incomplete grades (IC) shall be applied.
13. A student who incurs an “IC” grade in a course that is a prerequisite to the next clinical course shall be prevented from registering for that clinical course.
14. Interns shall be scheduled to work five days per week with two days off or according to the specific monthly duty roster/schedule of the host training site for its employees.
15. Interns/students are authorized to take 30 minutes’ break.
16. Interns/students are requested to complete their “attendance log book” daily and accurately.
17. During the Holy month of Ramadan, intern’s/trainee students work as per the host institution’s policy.

Uniform Policy

This policy applies to all bonafide students of the University of Nizwa enrolled in the School of Nursing. The uniform is worn at all times when the student is in the clinical area and whenever the student represents the University of Nizwa or the School of Nursing in meetings and conferences.

SPECIFICATIONS

1. Female Student

Scarf

It is made of plain white material. It is secured snugly under the chin and pinned to the tunic on the shoulders. It should not hang loose on the front. **NO HEAD ACCESSORIES TO BE WORN UNDER THE SCARF.**

Tunic

It is made of white material with long sleeves. It bears the university logo with two front pockets. The length should be at the level of the knee.

Trousers

It is made of plain white material, the length of which is at the ankles.

2. Male Student

Tunic

It is made of plain white material with short sleeves. It should have the university logo on the upper left corner and 2 front pockets.

Trousers

It is made of plain white material, the length of which is at the ankles. It is of straight cut type with the bottom properly adjusted according to the student's size.

**Note: Male students must be clean-shaven. Hair should be neatly combed trimmed close to the nape.*

Appendix 1 and 2: uniform pattern

Shoes

The shoes are plain white leather or canvas with non-skid rubber soles and low heels. Sling-backs, clogs and sandals are not allowed. Plain white rubber or running shoes are acceptable.

Identification Card/Name Tag

The university card is worn with the clinical uniform. It should be hanged across the chest where it is visible for easy identification.

Jewelry

The only jewelry allowed is a nurse's watch with second hand. Married students are allowed to wear their wedding band.

Socks

Only plain white (no designs or frills) socks or hose must be worn with the shoes.

Fingernails

Fingernails MUST be trimmed short. No nail polish is allowed.

Female students - MAKE UP

NO excessive make up. This applies to the face in general and especially to the eyes and lips. Light colored lipstick may be applied.

It is expected that all students comply with this policy. Should a student fail to comply and adhere to the above-mentioned guidelines, the following course of actions apply:

- **1st offense**-a documented verbal warning will be given to the student by Clinical Instructor.
- **2nd offense**- written warning will be issued to the student by the Clinical Instructor and co-signed by the Clinical Coordinator, and noted by the Associate Dean of the School of Nursing..
- **3rd offense**- a written report will be issued by the Associate Dean of the School of Nursing and the student is referred to the Dean for appropriate disciplinary action.

SECTION IV

GRADING SYSTEM

4.1 Grading Method

THEORY

Grade Description

Grades (with Numeric Value)

Letter grades are used to describe the achievement level attained within a particular course. A final semester grade is based on continuous assessment throughout the semester as well as a final examination. A final examination is customary but may not be considered necessary in certain types of courses.

Grade Designations (Without Numeric Value)

The following grade designations form part of the overall University grading system but do not carry numeric value.

Incomplete (IC)

The Incomplete is used when two basic conditions have been met:

- The student has a passing level in the course work which he/she has completed by the end of the course,
- The student has been prevented by circumstances beyond his/her control, such as illness, accident, or family emergency, from completing all the course requirements on time.

Attention

- An Incomplete is NOT intended to give an extension to a student who has completed all elements of a course with failing status, NOR is it designed for a student who simply does not complete requirements on time. It is not an option which may be elected by the student.
- The instructor has the prerogative of requiring documentation and/or college approval of the request, and will inform the student, in writing, of the condition(s) for completion, specifying a final submission date as soon as possible and no later than the University maximum of one semester (including the summer session).
- The instructor will specify to the student and Record and Registration the grade to which the Incomplete will revert if the

completion date is not met. Unless a new grade is submitted to Record and Registration that default grade will replace the Incomplete at the end of the following semester.

- **‘W’ (Withdrawn from the Course)**
A ‘W’ is assigned to a student who withdraws formally from a course within the prescribed deadline (see “Withdrawals”). A course dropped after the deadline or without completing the Drop/Add form, or de-facto by ceasing to attend is assigned an ‘F’ grade.

Grade Scale

Each of the grades described above carries, for the purpose of computing a weighted average, the values described in the table below (for a 4- point system):

LETTER GRADE	GPA	PERCENTAGE
A	4.0	96-100%
A-	3.7	90-95%
B+	3.3	87-89%
B	3.0	84-86%
B-	2.7	80-83%
C+	2.3	77-79%
C	2.0	74-76%
C-	1.7	70-73%
D+	1.3	66-69%
D	1.0	60-65%
F	0	Less than 60%
IC	-	Incomplete
W	-	Withdrawn Officially
WF	-	Withdrawn expectation of Failure

Calculation of Grade Point Average

The Grade Point Average (GPA) is a weighted average which summarizes each of the two levels of activity: the semester and the cumulative work to date

- The **SEMESTER GPA** is calculated on the courses taken within a given semester.
- The **CUMULATIVE GPA** is calculated on all courses taken to date, inclusive of all semesters. This is a single total calculation (not the average of averages).

The **SEMESTER GPA** is calculated as follows:

- Each course is designated a number of credits based upon a standard ratio of contact hours within the semester. This ratio reflects the approach to learning used within the course. A complete list of course types and ratios is appended.
- Each grade is designated with a numeric value.
- The numeric value of the grade is multiplied by the number of credits for the course.
- The result is called the grade points earned.
- The **TOTAL GRADE POINTS** earned is **DIVIDED BY** the **TOTAL CREDITS ATTEMPTED**. In both cases only courses with numeric-value grades are considered. (Please note that in such a computation, 0 (F, FSP) is a numeric value). The resultant quotient is the Grade Point Average.

The grade designations I, W, P, NP, IP, TO, and AU are not calculated in this average.

Example

Course Code	Credit	Grade	Numeric Value of Grade	Grade Points
ARAB 100	3	A	4.0	12.0
ENGL150	3	B	3.0	9.0
NURS 460	2	C+	2.3	6.9
BIOL 101	4	D	1.0	1
HIST 150	3	IC	-	
				28.9

Total credits attempted 15
 Total credits earned 12
 Total credits for GPA 12
 Total grade points earned 28.9
 Grade Point Average (**GPA**) $28.9 / 12 = 2.408 = 2.41$

*Note: *The average is calculated to 2 decimal places.*

At the end of each semester a semester GPA will be calculated, along with a cumulative GPA which totals all credits attempted and earned to date.

Colleges may use a variety of different averages for various decisions regarding standing and progression as long as these are approved by the Academic Council. Such averages must be descriptively titled other than Grade Point Average: for example, Major Average.

4.2 Progression Standards

1. A student who achieves a **MINIMUM GRADE POINT AVERAGE OF 2.0** on both semester and cumulative averages as well as any required minimum grade(s) in specified course(s) may proceed without condition in his/her degree program.
2. A student's course load status will be **EXTENDED** if the semester GPA on a full course load in the two preceding semesters was **AT LEAST 3.00**, or if the **CUMULATIVE GPA** is at **LEAST 3.00**. Such a student may register in up to 18 CREDITS.
3. A student who achieves a Grade Point Average as described in (b) **BELOW** will be placed on probation. This is an academic status assigned to students who are earning sufficient grades below 'C' which will jeopardize their prospects of graduation. It is a constructive requirement to reduce the student's course load to a manageable level until the academic difficulty is resolved success-fully. The measure for determining probation status is the Grade Point Average, with semester and cumulative standards as described below:

a) Although not formally on probation, a student will be advised to take

CORRECTIVE AND REMEDIAL ACTION on his/her own behalf when the current semester GPA falls between 1.00 and 2.00 although the cumulative GPA remains above 2.0. In such a case the student must have a documented interview with his/her advisor before registering for the next term, and any corrective measures noted. These may include simply discussion or any of the following:

- reduction of course load
- postponement of a course to a subsequent semester
- supplementary math, language or study skills courses
- referral to University services (e.g. Student Affairs, Health Clinic) for assistance with personal or health problems
- change of major

b) A student will be placed on probation and required to take remedial action when

- the cumulative GPA falls below 2.0, or
- the cumulative GPA is 2.0 or above but the current semester GPA falls below 1.0, or
- the cumulative GPA is 2.0 or above but the semester GPA is below **2.0** for 2 consecutive semesters.

In such cases the student will be required to reduce his/her course load to 12 credits or less.

4. A student on probation must raise his/her cumulative GPA to at least 2.0 within three (3) consecutive semesters. A summer session counts as one of the three semesters if a student registers for full load (6 credits) in that session. A student who completes two of these three semesters and is still below 2.0 will be sent a warning notice reminding him/her of the remaining semester within which to achieve a cumulative GPA of 2.0. A student who fails to fulfill this condition will be required to change major or withdraw from the University.

Rules for Courses Repetition- PROBATION POLICY

While students may repeat, with the approval of the academic advisor, courses in which they were awarded C- or below, the following rules shall apply to repetition of courses with F and D grades:

R1. Any student who fails a course in any semester must repeat the course in the first semester it is next offered.

R2. Subject to R1 above, and the maximum number of registered credits allowed, all students under academic probation must repeat some or all of courses with Ds, in the first semester the courses are next offered.

R3. The number of courses with Ds that must be repeated shall be determined by the student's CGPA in accordance with the following divisions:

- i. If the CGPA ≤ 1.4 , then the student shall repeat as many F and D courses as the full semester registration load allows.
- ii. If $1.4 < \text{the CGPA} \leq 1.7$, then the student shall repeat as many F and D courses as half the semester registration load allows.
- iii. If the GPA > 1.7 and < 2.0 , then the student shall repeat at least one D course.

A student must repeat any failed course which must be repeated in its entirety. A student may also repeat a course in which any passing grade has been earned.

In all cases of repeated courses, all grades earned appear on the transcript but the **most recent grade** only will be used in the calculation of the Grade Point Average (even if it is lower than the original grade).

A student who fails a course more than once should explore other options such as registering in an allowable substitute as approved by the HOD; change of major; or transfer.

Grade Change

- All grades other than 'FSP' and Incomplete and 'IP' are considered final once formally submitted to the Dean of Record and Registration.
- Final grades may be changed only if there has been an error in computation or transcription. In extraordinary and documented circumstances a grade may be revised to an Incomplete. (See Incomplete)
- No final grade can be revised by examination or the submission of additional work after the end of the semester.

Grade Review- Grade Appeal- electronic

- Each Academic Department shall form a Students Grievance Committee.
- Within the FIRST TWO WEEKS after the announcement of the exam's results, a student may appeal to the college Dean on the grade awarded to him/her using the appropriate form.
- The Dean forwards the form to the Department Grievance Committee, and in the light of the committee's recommendation, the Dean inform the student about the result of his/her appeal.

Degree Classification

Degrees awarded shall be classified based on the final cumulative grade point average (GPA) earned on all courses within the degree plan according to the following scheme:

Final GPA 3.75-4.00 Distinction with honors
Final GPA 3.30-3.74 Distinction
Final GPA 3.00-3.29 Very good
Final GPA 2.50-2.99 Good
Final GPA 2.00-2.49

SECTION IV

STUDENT RESOURCES AND SUPPORT SERVICES

5.1 Nursing Student Organization

Objectives

The Nursing Student Organization (NSO) is dedicated to fostering the holistic development of Omani student nurses, both professionally and personally. Inspired by His Majesty Sultan Qaboos bin Said's vision for the comprehensive growth of Omani citizens in educational, social, and health domains, the NSO strives to contribute to the well-being of the University of Nizwa community and beyond.

The primary objective of the NSO is to promote health awareness among students and the wider community, guided by the motto, "Empowering Health, Inspiring Care." Additionally, the NSO seeks to emphasize the vital role of the nursing profession in healthcare.

Other key objectives of the NSO include:

- Disseminating health awareness within the community.
- Educating the community about the roles and contributions of the nursing profession in healthcare.
- Providing essential health services to the university community.
- Actively participating in university-wide community activities.
- Conducting nursing research in areas relevant to the profession.

Activities

The NSO will undertake a variety of activities to achieve its objectives, including:

1. Health Promotion Activities

- Organizing health screening programs for students and staff.
- Conducting lectures and workshops on health promotion, disease prevention, and healthy lifestyles.
- Inviting guest speakers to discuss current health-related topics and trends.

2. University Community Engagement

- Celebrating Nurses' Day annually on May 12th to honor the contributions of nurses.
- Participating in university-wide events and activities to foster collaboration and community spirit.

3. Sports and Social Activities

- Engaging in sports and social events organized by the university to promote teamwork and well-being.

4. Health Clinic Services

- Providing first aid and basic health services to students and staff during university events and emergencies.

5. Publications

- Publishing the NSO newsletter to share updates, health tips, research findings, and information about upcoming events.

5.2 Academic Support Services

1. CENTER FOR INFORMATION SYSTEM

The Center for Information Systems (CIS) at the University of Nizwa contributes a great deal towards the University goal of providing an outstanding education and services to the community and leading in the Higher Education sector. CIS is challenged to support the University's Vision of becoming a hub of knowledge and enlightenment. CIS will translate this vision by integrating technology into the fabric of the University teaching, research, and service in ways that position us to reach beyond competence to greatness. Looking forward, University of Nizwa must and will employ Information Technology as a strategic resource, enabling and facilitating change, in its quest to become the nation's leading university.

SERVICES:

EDUWAVE AND WAVEERF

The University is aiming towards deploying blended learning that uses electronic learning and technology as well as the classic class rooms and teachers. The WavePortal system provides wide services starting from web based students' admission, registration, following academic status and continuous communication with faculty and University administration.

- Learning management system is also a built-in feature of Eduwave where traditional books can be converted to an online format that

can be pushed to individual students and managed by instructors. The WaveERP of administrative and financial procedures are also going smooth as they all run under one integrated application that support recruitment, payroll and personnel, procurement and other support services.

Classroom Support

- CIS provides technical support for both general purpose classrooms and multimedia classrooms. On call support is available 7:45AM - 5PM Saturday through Wednesday. On special request support is also provided during others timing and weekends. Instructors' computers in computer labs are equipped with soft VoIP phone to contact the helpdesk line. Other room are have stickers with the GSM numbers of on duty contact to provide quick help.

Research Support

- CIS assists campus researchers in several ways. Whether you're a student, faculty or staff member, you can take advantage of variety of software and computational processing. The DARIS Research Centre has been equipped with high-end computational processing power and data management to add greater opportunities for researchers.

Campus Security Camera System

- This system monitors and video records predefined locations at campus such as classes, labs, library, etc. This is to guard students, control their behaviors and secure university resources. The system also allows connectivity to the Internet to broadcast live pictures from the campus

Instructional Support

- If instructors need help publishing course information online, troubleshooting problems in your classroom or even grading your tests, CIS can help. CIS Teaching and Learning even offers events and workshops to help you learn more about multimedia classrooms and technology that can assist you in and out of the classroom.

Teaching and Learning Events

- Teaching and Learning events cover a variety of topics including the use of technology in the classroom, events designed to educate the campus about the effective use of technology, and emerging technologies. CIS provide technology support to the events including data and voice connectivity, video and Audio, etc.

Exam Scanning

- Exam Scanning is a computerized scoring and analysis service for multiple choice tests, based on a University of Nizwa general purpose Answer Sheet. This service is available for any course offered through the R&R office.

Software and Hardware

- CIS can help in assuring staff, faculty and student hardware and software needs are met in order to function on campus. Software requirements for faculties are taken every semester. Microsoft products are available under the Microsoft campus license program.

Printing and Photocopy Services

- A dedicated printing and photocopying center provide printing/ photocopying of text books, brochures and leaflets, learning documents as well as poster and visiting cards. Print or photocopy jobs can be sent electronically to the center or delivered by hand after receiving required approvals.

Short Message System

- SMS will allow the University to communicate with students through mobile short messages. A student can enquire about his/her results for example via push and pull mobile service.
- url: <https://www.unizwa.edu.om/index.php?contentid=227>

Record and Registration

- To provide transparent, smooth and responsive procedures for admission, registration and advising services supporting effectively faculty, students and relevant local community.

Centre for Academic Guidance and Follow-up

- The Centre for Academic Guidance and Follow-up is considered to be a pivotal axis in the educational process. It aims at helping students to overcome the learning difficulties that prevent them from achieving their educational goals successfully; it also provides every kind of help that can lead them to excellence and perfection till they are able to graduate successfully. This is done through guiding the students and advising them to get the achieve results and adapt to the University environment. The Centre also urges the students to take advantage of the academic opportunities that it provides in order to raise their educational achievement level.
- [url:https://www.unizwa.edu.om/index.php?contentid=9&comingfrom=1187](https://www.unizwa.edu.om/index.php?contentid=9&comingfrom=1187)

5.3 Main Library

The University Library was established with the official inauguration of the University of Nizwa in October 2004. Presently, the Main Library is housed in Building 21 at the Initial Campus and consists of 3 large Halls. Two Halls provide separate studying facilities for males and females. In addition, the Main Library provide study tables conducive to individual studying and for larger study groups in efforts to accomendate student learning needs.

The Central Hall houses Reference Collections, General Circulating Collections, Reference Desk, Circulation Desk, OPACs, Self Check-out Station, and Photocopiers. Twelve (12) computers have also been provided in the Central Hall to provide access to all electronic resources available in the library.

The Library provides service to faculty, staff, students, researchers, and outside users. In its initial stages, the Main Library has been designed to accommodate approximately 100,000 library items to serve the University community. Plans are under way to build a five storey Main Library at the Main Campus in the near future.

Library Management System

The library management system “Virtua LMS” integrated with RFID library security system is the first of its kind in the area. It is a fully arabized, web based, integrated solution that addresses the university main library requirements. The main library system allows connection to Britanica Encyclopedia, Electronic Books and other international libraries such as the Library of Congress. This broadens the library resources beyond the building boundaries and opens an endless recourse that

makes the search for information easier and more exciting. On the other hand it gives the library management usage statistics of resources that is difficult in traditional books services. One of the intelligent components of the library system is the Self Checkout Station which allows patrons (Students, Faculty or staff) to borrow and return books without any intervention from the librarians.

url: <https://www.unizwa.edu.om/index.php?contentid=10&comingfrom=1875>

5.4 The Writing Center

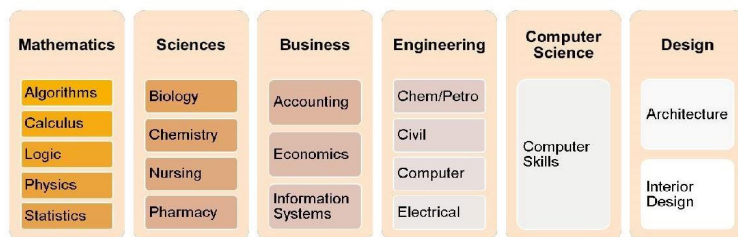
Strategic Aims:

- Provide student-centered learning opportunities for learners to practice and develop essential academic skills.
- Promote academic excellence and integrity through student mentoring programs that develop authentic academic writing practices and support independent learning.
- Provide academic support through customized 1-on-1 tutorials and small group workshops to enhance learning opportunities.
- Provide open learning environments that support innovation and creativity for students to practice and develop their knowledge and academic interests.
- Provide peer mentoring training and assist peer tutorial staff with gaining relevant work experience, leadership opportunities, and effective time management skills.
- url: <https://www.unizwa.edu.om/index.php?contentid=480&comingfrom=1878>

5.5 Learning Enhancement

- The services offered by the Learning Enhancement Center are unequivocally student-centered and are acquiescent to student learning needs. Academic support is provided to students that reserve appointments on a voluntary basis, and through recommendations by faculty and academic advisors. The LEC provides academic support through the assistance of highly motivated students that serve as peer tutors that have achieved a GPA above 3.0 and completed 60 credited hours of study. Peer tutorials are conducted on a one-on-one basis by appointment for 25-minute sessions, and specialized workshops for a maximum of 10 students are provided for 50 minutes in duration. In addition, the LEC provides independent study initiatives through various computer software programs available to students to utilize.

LEC Peer Tutorial Courses and Subjects



Subject	Code	Course
Mathematics	MATH116	Pre-Calculus
	MATH211	Calculus I
	MATH212	Calculus II
	STAT101	Introduction to Statistics
	PHYS101	General Physics I
	PHYS150	General Physics II
	LOGI100	Logic
	MATH001	Basic Mathematics
Sciences	-	Course Materials
	BIO101	General Biology I
	BIOL102	General Biology II
	CHEM101	General Chemistry I
	BIOL344	Introduction to Microbiology
	CHEM107	Fundamentals of Chemistry
	CHEM265	Organic Chemistry I
	CHEM334	Biochemistry
Business	-	Course Materials
	ACCT210	Introduction to Accounting
	BUSI267	Technical Writing For Business
	BUSI311	Introduction to Operations Management
	ECON101	Introduction to Economics
	ECON217	Introduction to Mathematical Economics
	FINA110	Business Finance
	MNGT112	Fundamentals Of Management
Engineering	MNGT151	Introduction to Business
	-	Course Materials
	ENGN103	Engineering Drawings
	ENGN101	Introduction to Engineering
Computer Sciences	COMP151	Introduction to Algorithm & Programming
	-	Course Materials
Design	COMP101	Introduction to Computer Skills
Specialty Workshops	-	Course Materials
Computer Self Study	-	-
Review for Quiz & Exam	-	-

url: <https://www.unizwa.edu.om/index.php?contentid=1933>

5.6 Other Student Support Services

1. Transportation:

Nizwa University provides transportation in air-conditioned shuttle buses to all students from different points in Nizwa to the University Campus. Buses are scheduled from 7 a.m. until 11 a.m. and take students to the University from designated locations in the City of Nizwa from 2:00 p.m. till 6:00 p.m. buses shuttle students from the University back to designated points in the city. University of Nizwa offers transportation to students from Nizwa to all cities of Oman during vacations.

The transportation to and from the University is secure and reliable, and students who do not own cars need not worry about how to get to the University. The expense for transportation from the University to Nizwa and vice versa is 10 R/month.

2. Dormitories:

There are 45 separate locations for student residences, one for male students and the other for female students. Each residence has a meeting room, a large kitchen, a multiple purpose activity room, a TV room, a study hall, internet labs, a supermarket, laundry and dry-cleaning facilities. Visitors are welcome at certain times. There are around -the-clock qualified and experienced supervisors to help the students and to ensure that the residence halls are quiet, and that order prevails for the comfort of all residents.

The University provides transportation for students in the Housing Complex to go shopping three times a week.

3. Food Services:

University of Nizwa provides modern cafeterias for male and female students where meals are served at reasonable prices. Cafeterias provide all types of sandwiches beside a hot-cooked meal for lunch or dinner. Cafeterias provide service not only for students, but also for those in the residences. They remain open until evening. There is a direct inspection for the cafeteria from the local authority. Ongoing inspection is carried out for staff and food.

4. Supermarket:

University of Nizwa provides a supermarket inside the campus. It remains open until evening. Inside this supermarket, students can buy soft drinks, sweets, biscuits, cosmetics, accessories etc.

5. Sports Activities:

University of Nizwa provides students, male and female with sport facilities on campus and off campus. In the gym, there are professional trainers for the students in various sports. Sports are one of the main activities of the student associations. The university offers all facilities needed for sport activities.

6. Spiritual Services

Inside the campus, there are 2 mosques, one for male and another one for female. The university arranges for several symposia and general lectures on Islamic lectures.

7. Health Care Facilities:

University of Nizwa offers health services to students through a well-established medical center. Inside this center, the facilities required for diagnosis and treatment of common diseases are available with a medical staff and a pharmacy. A biochemical-microbiology lab equipped with the required facilities for diagnosis is available for students, faculty and staff.

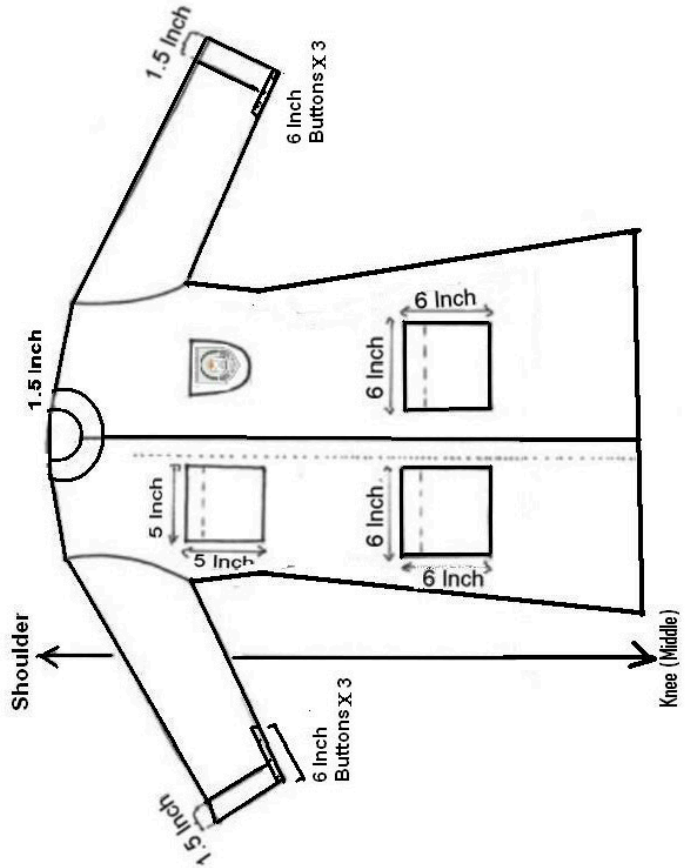
8. Students' Association

University of Nizwa gives the students the complete freedom to elect their association in each College and/or School. The students practice several social, sports, scientific, religious and picnic activities through such associations. The University offers all facilities required for these associations. College of Pharmacy & Nursing has its own association which is divided into 2 groups one for students of Pharmacy School & another one for students of Pharmacy for Nursing School. The group of Pharmacy practices several activities among which social meetings, scientific picnics, general lectures, special newspaper, wall magazines, seminars etc.

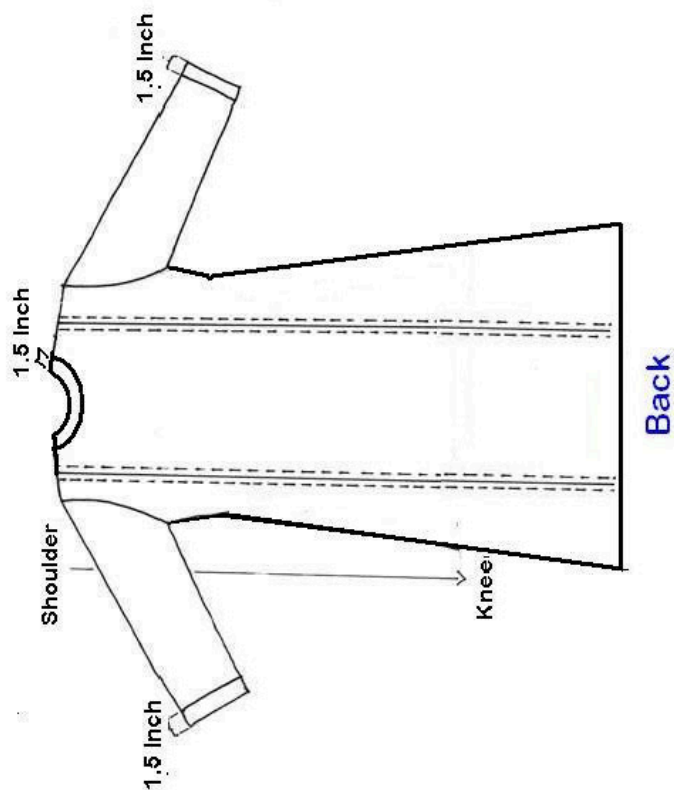
URL: <https://www.unizwa.edu.om/index.php?contentid=639>

Appendix 1: Female uniform

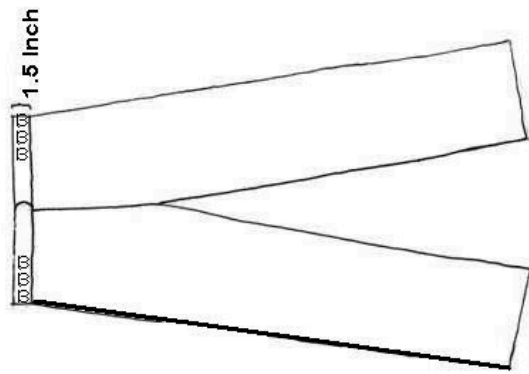
BSN AND DIPLOMA FEMALE STUDENT TOP



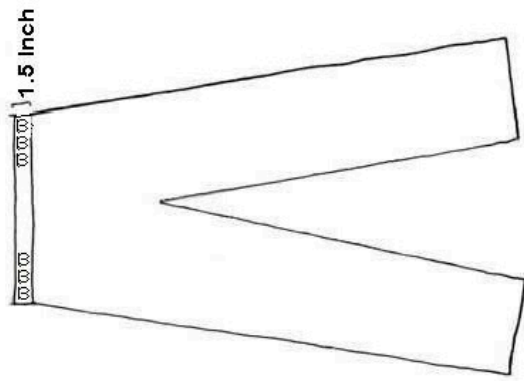
BSN AND DIPLOMA FEMALE STUDENT TOP



BSN AND DIPLOMA FEMALE STUDENT PANTS



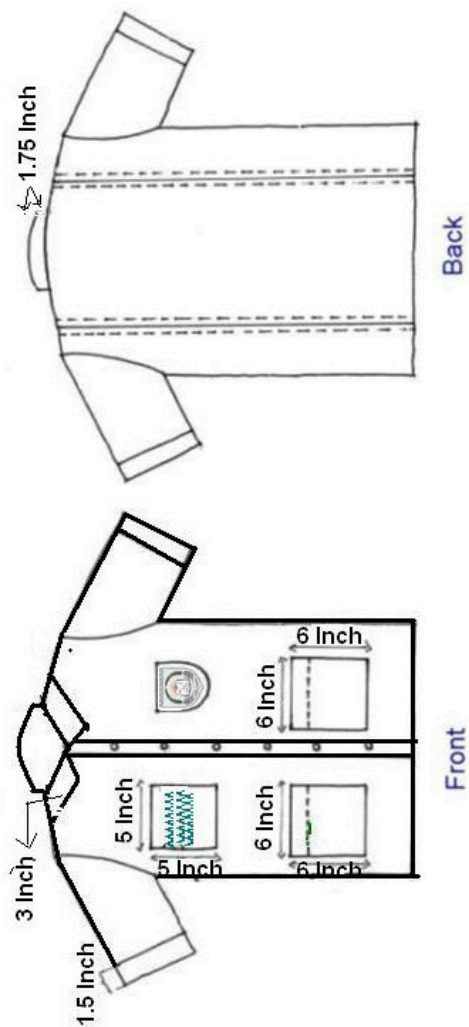
Front



Back

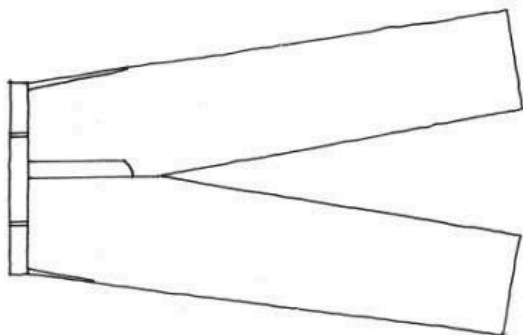
Appendix 2: Male uniform

BSN MALE STUDENT TOP

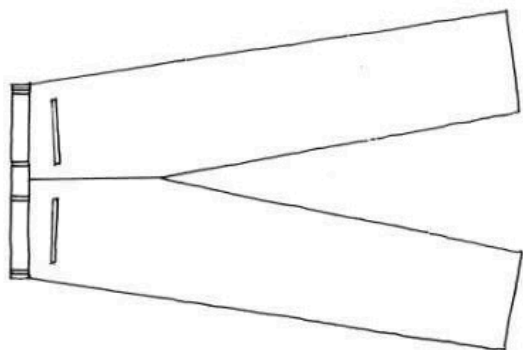




MALE STUDENT PANTS



front



Back

The background of the entire page is a solid teal color. In the upper-left corner, there is a series of parallel white diagonal lines that extend towards the center of the page, creating a modern, geometric design.

UNIVERSITY OF NIZWA
College of Health Sciences
School of Nursing

NURSING STUDENT HANDBOOK

DECEMBER 2024